

## TITRONIC® 500:

### The piston burette for simple and accurate dosing ...

The TITRONIC® 500 is the ideal piston burette for manual titrations, accurate dosing applications as well as the preparation of solutions. When used with TitriSoft 3.0, it acts as a titration burette or with the TitroLine®7000 and TitriSoft 3.0, it is an automatic dosing unit perfect to pre-dose a titrant.

#### Important features:

- ▶ Intelligent interchangeable modules with 5, 10, 20 and 50 ml volume capacity.
- ▶ Connect to a printer and/or an analytical balance.
- ▶ Remote control access via RS232 or USB interface.
- ▶ Connect up to 16 devices using one USB or RS232 port of a PC with the two integrated RS232 interfaces (Daisy Chain).



### ... preparing solutions and manual titrations

#### Manual Titration

It is true that the automatic titration is gaining ground, but manual titration remains one of the standard cost effective applications in the lab. Everywhere high precision and flexibility are required; a piston burette with an interchangeable dosing module is the best choice.

#### Important features:

- Titration using the manual controller dosing buttons.
- Titration rate can be adjusted to optimize titration speed and accuracy.
- Programmable automatic calculations, printer ready.
- Automatic weight recording when balance is connected.



#### Dosing

Besides titration, there are various routine dosing tasks that must be performed in the lab.

#### Important features:

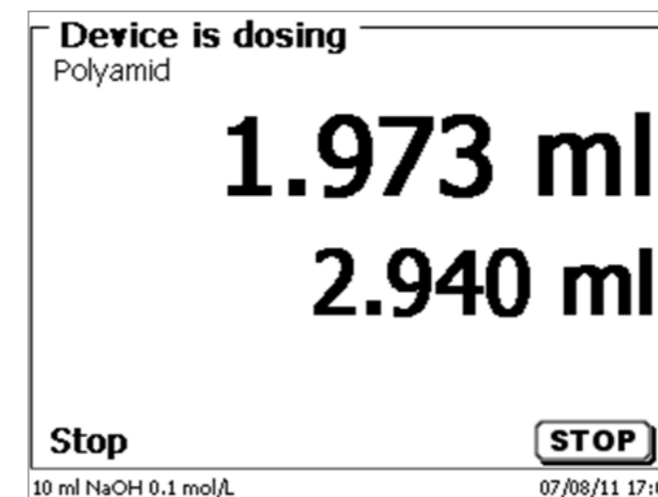
- Control dosing using the manual controller and the dedicated keypad.
- Adjustable dosing and filling rates optimize speed and accuracy.
- Store dosing methods with different parameters.

#### Solutions preparation

A special sample preparation mode is available on the TITRONIC® 500 where a reagent is dosed into a sample until the required concentration is reached. The sample is weighed, the dosing volume is determined. The volume can then be automatically added to the sample. This mode is used for e.g. preparing standard and sample solutions for viscometry.

#### Important features:

- Adjustable dosing and filling speed.
- Dosing volume is automatically calculated without additional PC software.
- Several methods with different parameters can be stored.
- Automatic weight recording when balance is connected.



## TitriSoft 3.0 – convincingly simple ...

The TitriSoft 3.0 titration software is the optimum solution for your titration tasks. The software can be used with Windows XP, Vista and 7 and supports your daily work procedures during sample preparation, titration and evaluation of the results. The software has been developed to be clear, logical and user-friendly.

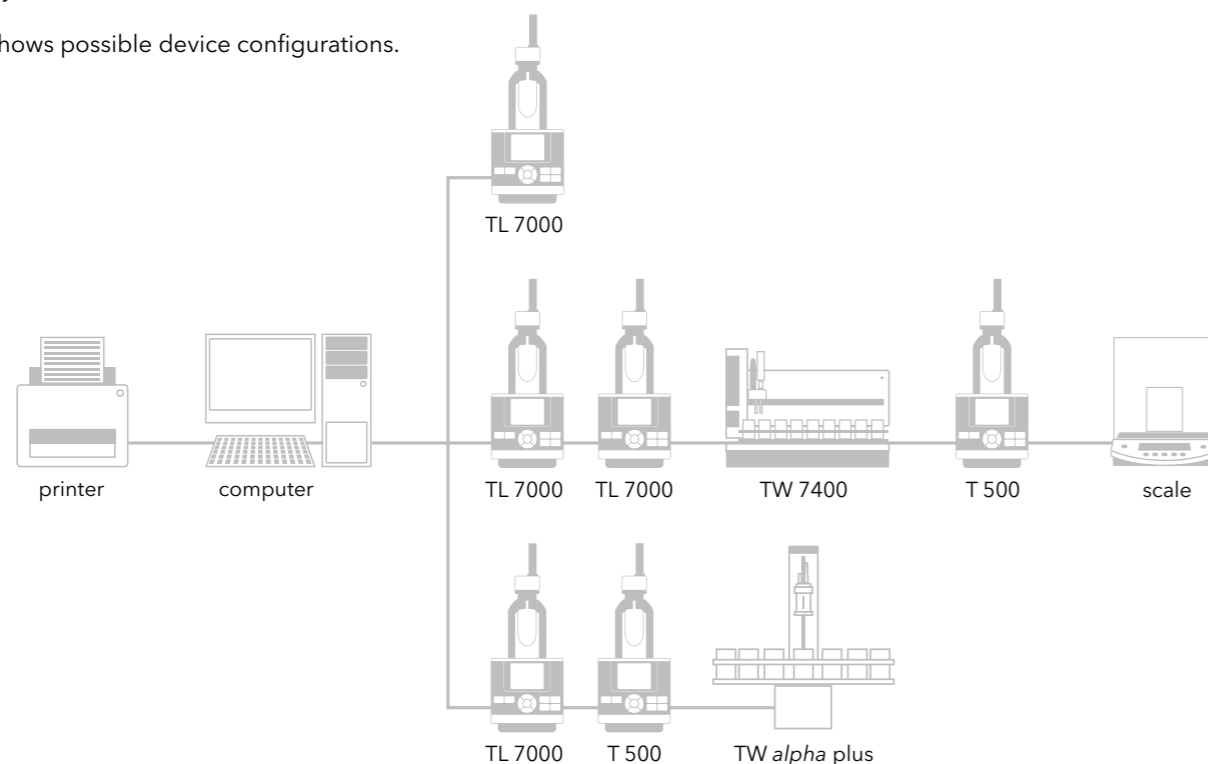
### Connection possibilities

Using TitriSoft 3.0 you can control the following devices from a PC:

- **Titration** (TitroLine® 7000, 7750, 7500 KF, 7500 KF *trace* and TitroLine® *alpha plus*)
- **Sample changers** (TW *alpha plus*, TW 7400, TW *alpha* und TW 280)
- **Piston burettes** (TITRONIC® 500 and TITRONIC® *universal*, TITRONIC® 110/200 and TITRONIC® 110 *plus*)
- **Balances**

You can connect the titration hardware to any of your PC's available USB-A or serial interfaces. Each of the interfaces allows different combinations of devices (configurations). To automate a titration procedure the software may be used to control the TitroLine® 7000 in connection with the TW *alpha plus* sample changer. For more complex titration tasks with sample preparation you can dose with piston burettes followed by titration with a TitroLine® 7000. Of course, you can also use the software for dosing only.

The image below shows possible device configurations.



### System requirements

For optimal and fast working with the TitriSoft 3.0 software your system should be equipped as shown below:

**Interface:** a free USB or RS232-interface per configuration

**Computer:** Pentium D (Dual-Core) 2 GHz or higher

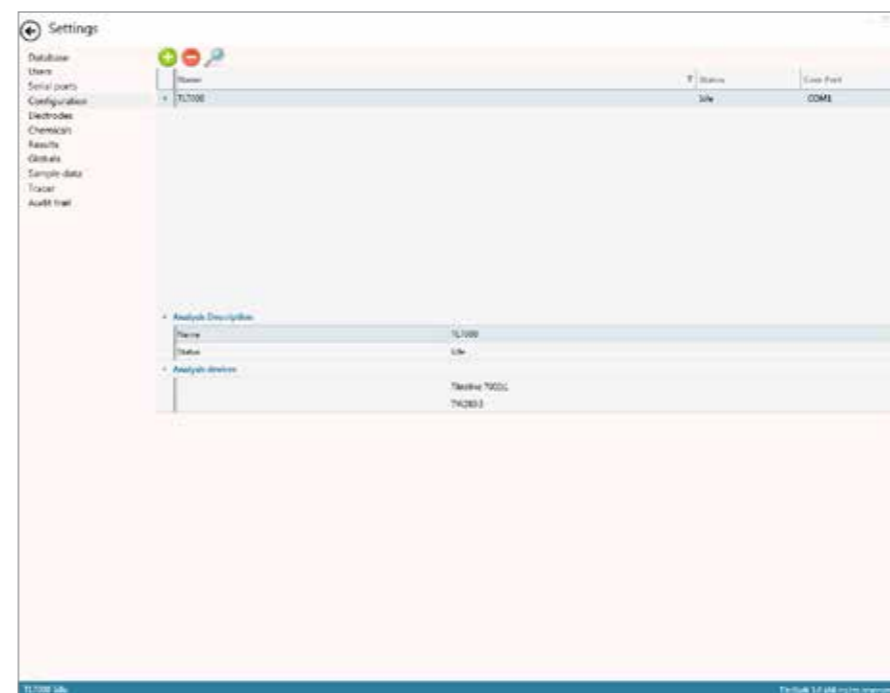
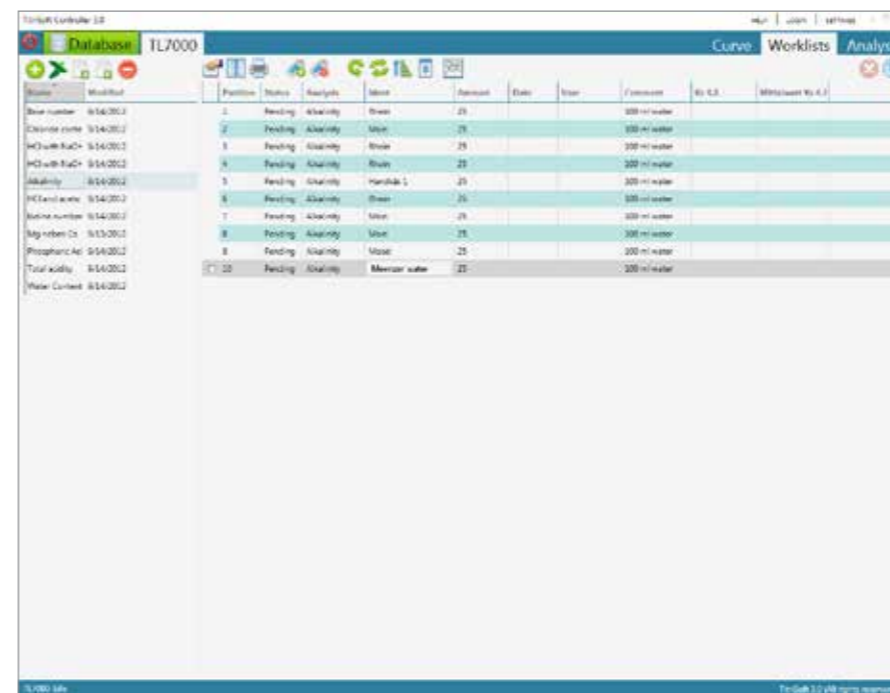
**Operating system:** Windows XP, Vista or 7

**RAM:** minimum 2 GB

**Hard disk:**  
minimum free storage volume 200 MB

**Graphics card:**  
minimum resolution 1280 x 1024

## ... strong benefits ...



### »Navigator«, the main menu

The different software tasks are assigned to five different centers:

- Settings,
- Database,
- Analysis,
- Worklists
- Curve

Each of these centers can be chosen at the menu bar.

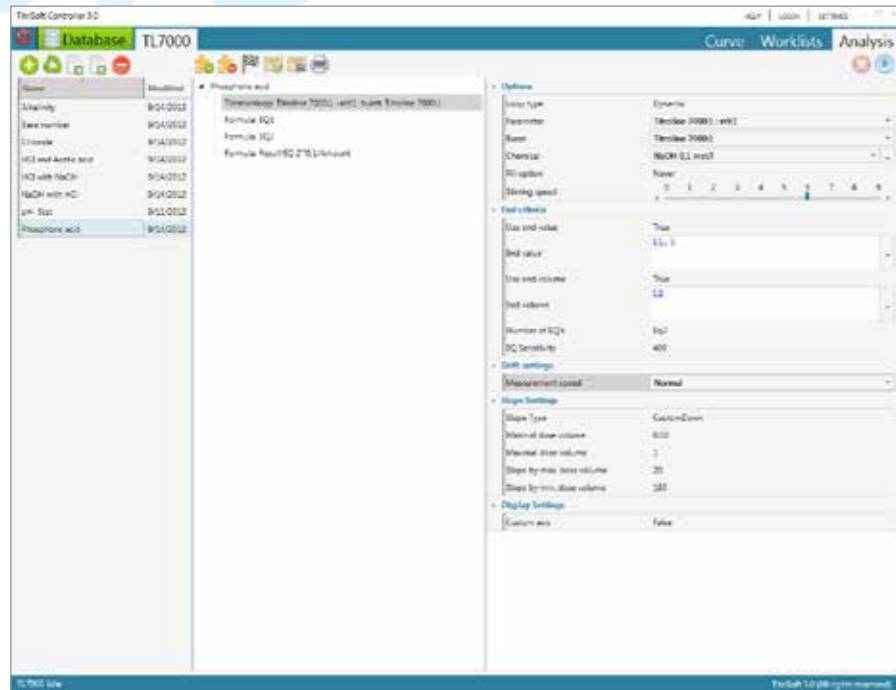
### »Settings«, the system configuration

In the system configuration, the software is set up for operation prior to running the first application, i.e. a configuration is set up with the connected hardware. The configuration of the attached hardware is automatically detected in a hardware scan. Each of these hardware configurations allows any number of "methods" and "work lists". Different configurations can work in parallel (see Connection Possibilities).

All TitriSoft users can be listed by their names. TitriSoft supports five user types. The Administrator has access to all configuration and software operation options. The "Administrator" has access to all configuration and software operation options. The "User" or "Advanced User" has the same rights as the Administrator but is not allowed to delete results, methods and worklists. Users are restricted to operation of the Titration Center which very much simplifies matters.

# 3.0

... clearly structured ...



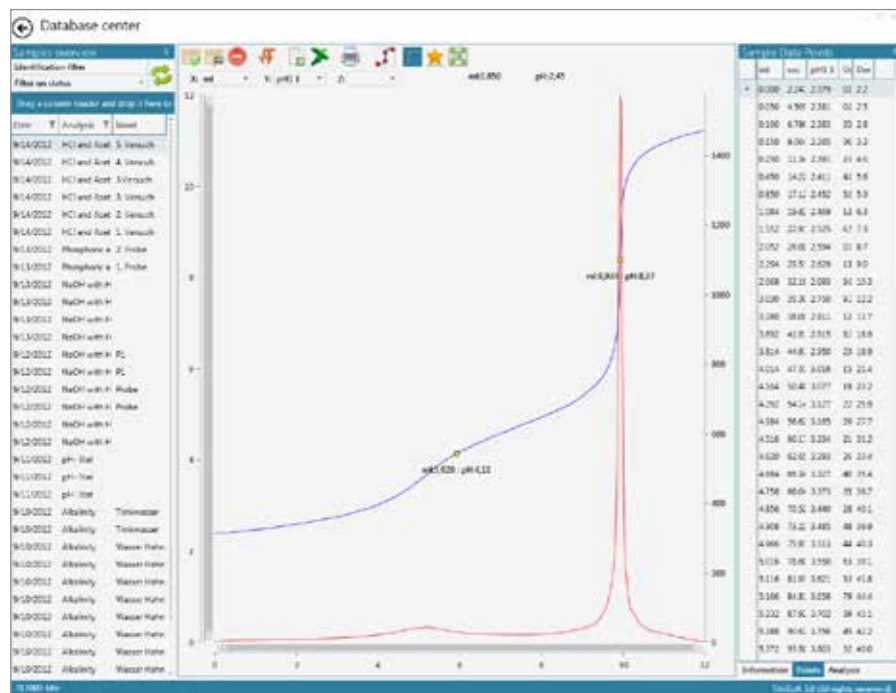
›Analysis, your method center

This is where you set up and save your titration methods. Even complex methods can be installed with a few mouse clicks. Adjustment of the titration parameters is facilitated by the use of symbolic slide controls. Functions such as waiting time, IF loops, repetition, dosings and measurements in addition to the titration parameters and calculation formulas provide virtually unlimited options for method procedures.

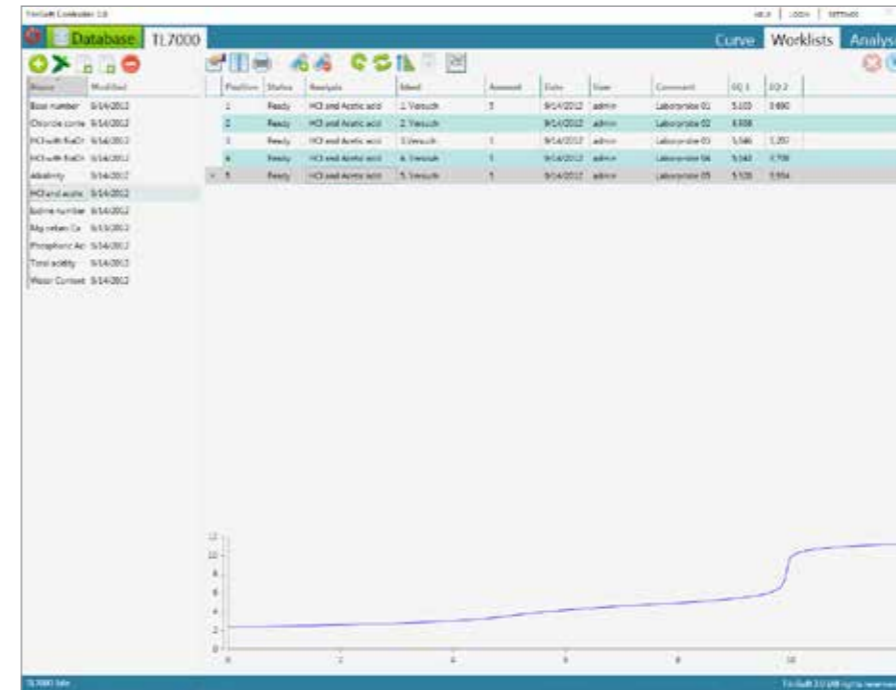
›Database, your database

Titration curves, results, measured values and used methods of all titrations are stored in the database. These data can be selected by sample name, date, user and method and loaded in a few seconds.

Information on titrations performed can be displayed in the form of a diagram, results list or measured value list. You can optimize stored titration information in accordance with your requirements, e.g. add and store subsequent calculations or analyze titration curves and print it out together. Additionally, an export of the data to Excel and ASCII is also available.



# ... highly productive: TitriSoft 3.0



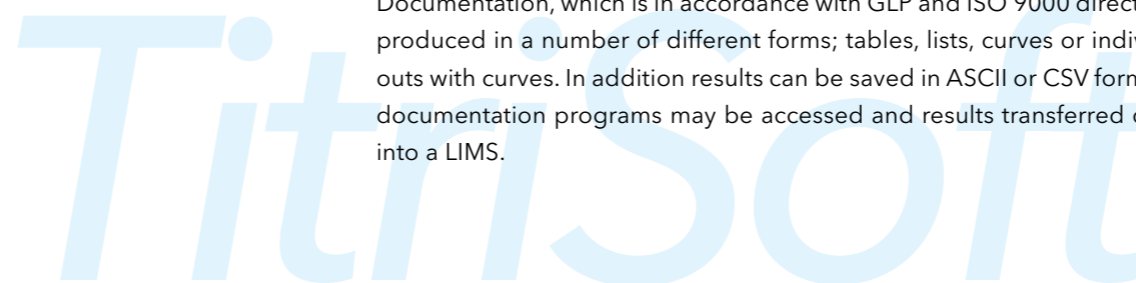
›Worklists, your clearly structured workplace

›Worklists is the place where you carry out your daily jobs, i.e. select methods, enter sample names and origin weighed-in quantities, start the work list and display (and print if desired) the results at the end of a titration. The work list shows the individual samples with the associated methods and their characteristics such as sample name, number, status, date, time, results and events and other freely configurable sample data, e.g. density.

During the process you can follow the titration under „curve“ or directly via the worklist. You can, however, simply allow the samples to be processed in the background and use the PC for other tasks or start an additional titration with another configuration in parallel.

When working with the TW *alpha* plus and TW 7400 sample changer, you can adjust various settings such as skip empty items, rinse and waiting options.

Documentation, which is in accordance with GLP and ISO 9000 directives, can be produced in a number of different forms; tables, lists, curves or individual print-outs with curves. In addition results can be saved in ASCII or CSV format, external documentation programs may be accessed and results transferred directly, e.g. into a LIMS.



# TitriSoft 3.0 P – simply reliable ...

In this case, the “P” stands for “pharmaceutical”. The TitriSoft 3.0 P fully meets all requirements of the FDA 21 CFR Part 11 regulation regarding „Electronic Records“, „Electronic Signature“ and „Audit Trail“.

The FDA (i.e. Food and Drug Administration of the USA) 21 CFR Part 11 regulations describe how to deal with electronically stored data (“Electronic Records”) and how to prepare electronic signatures (“Electronic Signature”). These regulations are binding for all companies offering medical, pharmaceutical or food products and services in the USA.

## System requirements

For optimal and fast working with the TitriSoft 3.0 software your system should be equipped as shown below:

**Interface:** a free USB or RS232-interface per configuration

**Computer:** Pentium D (Dual-Core) 2 GHz or higher

**Operating system:** Windows XP, Vista or 7

**RAM:** minimum 2 GB

**Hard disk:**  
minimum free storage volume 200 MB

**Graphics card:**  
minimum resolution 1280 x 1024

## Controlled Access

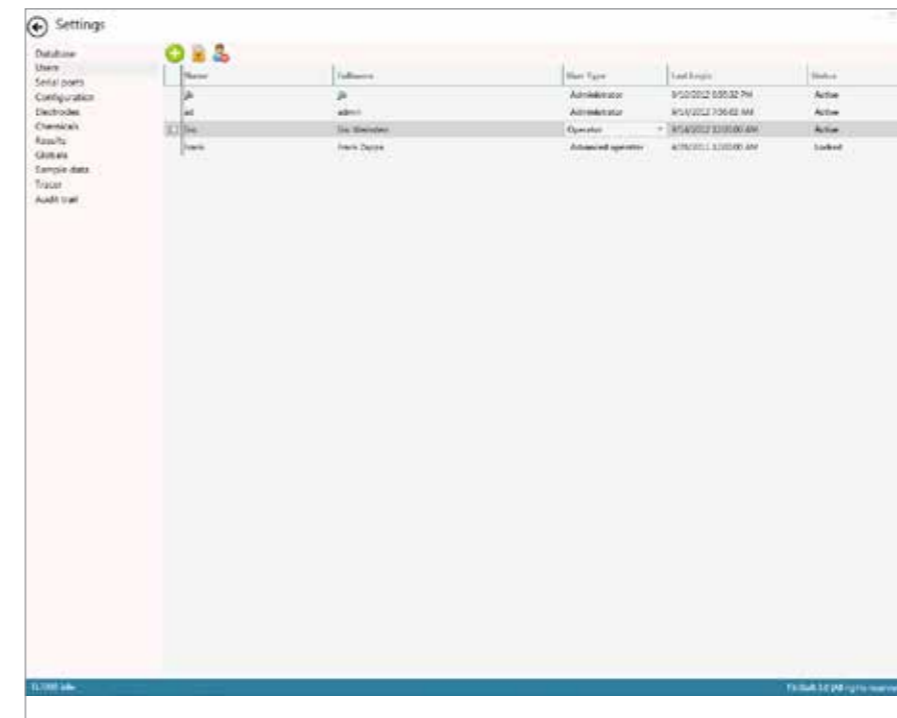
The controlled access guarantees that only authorized individuals have access to the software functions, according to your company’s security policy and the FDA requirements.

TitriSoft 3.0 P has 5 different access levels: The “Operator” level does only allow to carry out the routine titrations, whereas the “Advanced User” level is entitled to approve the methods. The highest level, the “Administrator” may set up the users and assign them the user rights. He even has the permission to delete records, but only after a copy of the database has been generated.

# 3.0 P

## Comparison between TitriSoft 3.0 and 3.0 P

Functions	TitriSoft 3.0	TitriSoft 3.0 P
Electronic Record		■
Electronic Signature		■
Audit Trail		■
Controlled Access		■
Copies of Records		■
Manual with forms for SOPs, IQ, OQ, PQ and validation reports		■
Straightforward procedure	■	■
All types of titrations	■	■
Comfortable worklists	■	■
Online titration curves	■	■
Clear documentation	■	■
Perfect titration control by PC	■	■



# TitriSoft



## Specifications - Piston burettes TITRONIC® 500 and automatic

## Titration TitroLine® 6000/7000/7500 KF/7500 KF trace/7750

Features	TITRONIC® 500	TitroLine® 6000	TitroLine® 7000	TitroLine® 7500 KF	TitroLine® 7500 KF trace	TitroLine® 7750
Display	Color online graphic	Color online graphic	Color online graphic	Color online graphic	Color online graphic	Color online graphic
Measuring input pH/mV with reference input	-	■	■	-	-	■
Wireless electrode recognition	-	-	■	-	-	■
Measuring input Dead stop (2 x 4 mm connector)	-	■	■	■	■	■
Measuring input generator electrode (2 x 4 mm connector)	-	-	-	-	■	-
Measuring input temperature (2 x 4 mm connector)	-	■	■	-	-	■
Interfaces	2 x USB-A, 1 x USB-B 2 x RS232	2 x USB-A, 1 x USB-B 2 x RS232	2 x USB-A, 1 x USB-B 2 x RS232	2 x USB-A, 1 x USB-B 2 x RS232	2 x USB-A, 1 x USB-B 2 x RS232	2 x USB-A, 1 x USB-B 2 x RS232
Balance connection	RS232	RS232	RS232	RS232	RS232	RS232
Printer (USB-A)	HP PCL, Seiko DPU S445, PDF	HP PCL, Seiko DPU S445, PDF	HP PCL, Seiko DPU S445, PDF	HP PCL, Seiko DPU S445, PDF	HP PCL, Seiko DPU S445, PDF	HP PCL, Seiko DPU S445, PDF
Intelligent interchangeable modules (5, 10, 20 and 50 ml)	■	■	■	■	-	■
Burette solution (steps)	10,000	10,000	10,000	10,000	-	10000
Manual titration	■	■	■	-	-	■
Dosing applications	■	■	■	■	-	■
Solution preparation (manual or automatic when connected to balance)	■	■	■	■	-	■
Automatic Titration (Independent without external software)	1)	■	■	■	■	■
Titration to mV and pH end points	-	2 EP	2 EP	-	-	2 EP
Dynamic and linear titration to inflection points (EQ) mV and pH	-	1 EQ	2 EQ	-	-	2 EQ
Particularly suitable for non aqueous titrations	-	-	■	-	-	■
Dead-stop-titration	-	■	■	■	-	■
pH-stat-titration	-	-	■	-	-	■
Water determination according to KF volumetry (10 ppm - 100%, recommended)	-	-	-	■	-	■
Water determination according to KF coulometry (1 ppm - 5%, recommended)	-	-	-	-	■	-
Standard methods	■	■	■	■	■	■
Number of user methods	15	15	50	50	50	50
Connection and control of autosamplers	-	-	■	-	-	■
Can be controlled with TitriSoft 3.0	■	-	■	■	■	■

<sup>1)</sup> Can be used as titration and dosing burette in automatic titration systems

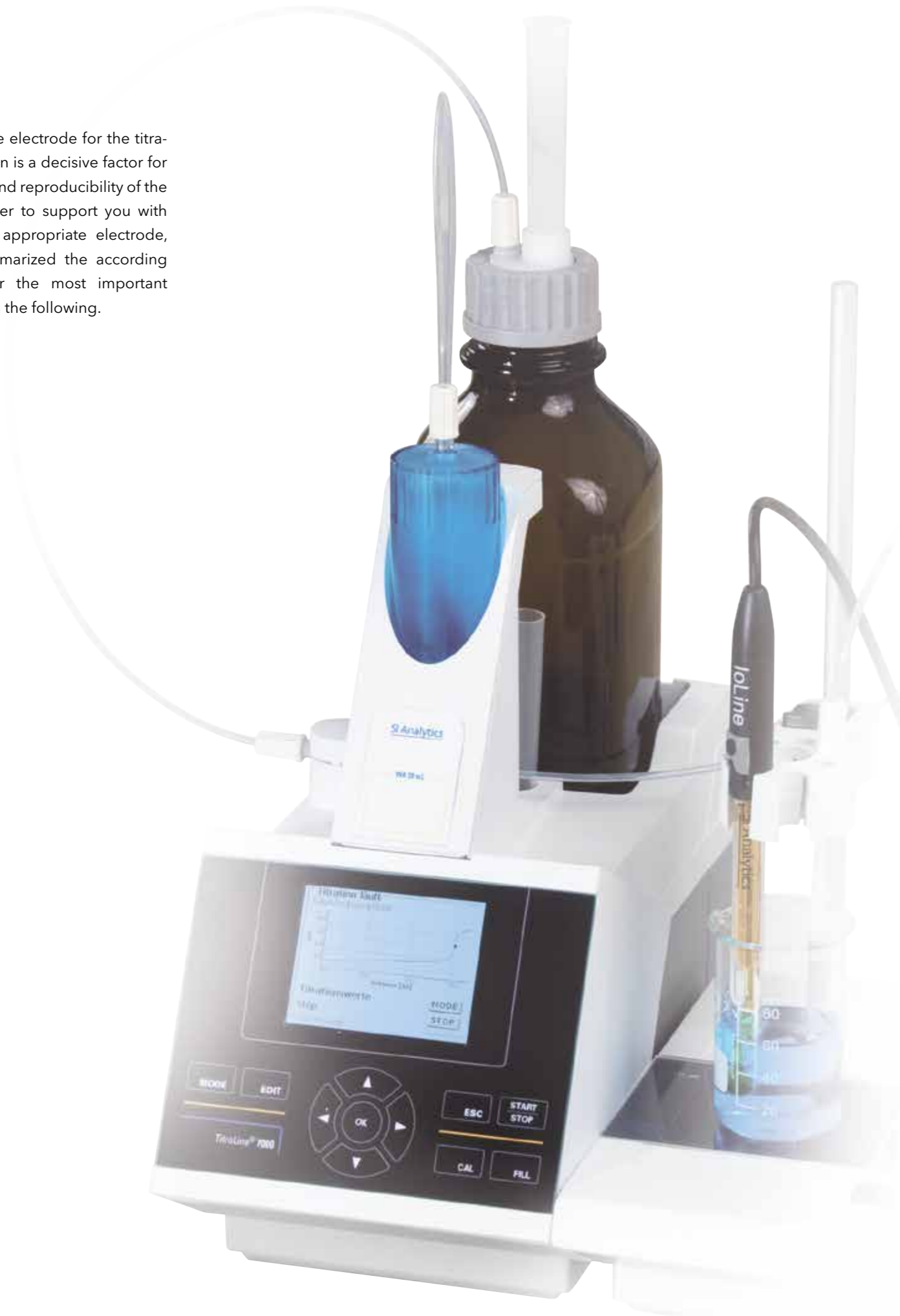
# Specifications – Piston burette TITRONIC® 500

# TitroLine® 6000/7000/7500 KF/7500 KF trace/7750

Features	TITRONIC® 500	TitroLine® 6000	TitroLine® 7000	TitroLine® 7500 KF	TitroLine® 7500 KF trace	TitroLine® 7750
Measuring input pH/mV with reference electrode input	–	pH/mV-input with 24 bit transducer Electrode socket according to DIN 19 262 or additional with BNC socket insert	pH/mV-input with 24 bit transducer Electrode socket according to DIN 19 262 or additional with BNC socket insert RFID receiver for SI Analytics ID electrodes	–	–	pH/mV-input with 24 bit transducer Electrode socket according to DIN 19 262 or additional with BNC socket insert RFID receiver for SI Analytics ID electrodes
Measurement range pH	–	-3.0 to 18.00	-3.0 to 18.00	–	–	-3.0 to 18.00
Display resolution pH	–	0.001	0.001	–	–	0.001
Accuracy pH (without sensor probe)	–	0.002 ± 1 Digit	0.002 ± 1 Digit	–	–	0.002 ± 1 Digit
Measurement range mV	–	-2000 to 2000	-2000 to 2000	–	–	-2000 to 2000
Display resolution mV	–	0.1	0.1	–	–	0.1
Measurement input Dead stop (2 x 4 mm socket)	–	Connector (µA) for double platinum electrodes Polarisation voltage variably adjustable from 40 to 220 mV	Connector (µA) for double platinum electrodes Polarisation voltage variably adjustable from 40 to 220 mV	Connector (µA) for double platinum electrodes Polarisation voltage variably adjustable from 40 to 220 mV	Connector (µA) for double platinum electrodes	Connector (µA) for double platinum electrodes Polarisation voltage variably adjustable from 40 to 220 mV
Measurement range µA	–	0 to 100	0 to 100	0 to 100	–	0 to 100
Display resolution µA	–	0.1	0.1	0.1	–	0.1
Accuracy µA (without sensor probe)	–	0.2 ± 1 Digit	0.2 ± 1 Digit	0.2 ± 1 Digit	–	0.2 ± 1 Digit
Measurement input temperature (2 x 4 mm socket)	–	Connector for Pt 1000 resistance thermometer	Connector for Pt 1000 resistance thermometer	–	–	Connector for Pt 1000 resistance thermometer
Measurement range temperature °C	–	-75 to 175	-75 to 175	–	–	-75 to 175
Display resolution °C	–	0.1	0.1	0.1	–	0.1
Accuracy °C (without sensor probe)	–	0.2 K ± 1 Digit	0.2 K ± 1 Digit	–	–	0.2 K ± 1 Digit
Display	3.5 inches -1/4 VGA TFT display with 320 x 240 pixels	3.5 inches -1/4 VGA TFT display with 320 x 240 pixels	3.5 inches -1/4 VGA TFT display with 320 x 240 pixels	3.5 inches -1/4 VGA TFT display with 320 x 240 pixels	3.5 inches -1/4 VGA TFT display with 320 x 240 pixels	3.5 inches -1/4 VGA TFT display with 320 x 240 pixels
Housing material	Polypropylene	Polypropylene	Polypropylene	Polypropylene	Polypropylene	Polypropylene
Front keyboard	Polyester coated	Polyester coated	Polyester coated	Polyester coated	Polyester coated	Polyester coated
Housing dimensions	15.3 x 45 x 29.6 cm (W x H x D), height with interchangeable unit	15.3 x 45 x 29.6 cm (W x H x D), height with interchangeable unit	15.3 x 45 x 29.6 cm (W x H x D), height with interchangeable unit	15.3 x 45 x 29.6 cm (W x H x D), height with interchangeable unit	15,3 x XX x 29,6 cm (W x H x D)	15.3 x 45 x 29.6 cm (W x H x D), height with interchangeable unit
Display resolution °C	–	Polypropylene Polypropylene	Polypropylene	–	–	Polypropylene
Weight	2.2 kg for basic unit 3.5 kg for complete device incl. interchangeable unit (with empty reagent bottle, without magnetic stirrer)	2.3 kg for basic unit 3.5 kg for complete device incl. interchangeable unit (with empty reagent bottle, without magnetic stirrer)	2.3 kg for basic unit 3.5 kg for complete device incl. interchangeable unit (with empty reagent bottle, without magnetic stirrer)	2.3 kg for basic unit 3.5 kg for complete device incl. interchangeable unit (with empty reagent bottle, without magnetic stirrer or TM 235 KF)	2.3 kg for basic unit without magnetic stirrer TM 235 or TM 235 KF	2.3 kg for basic unit 3.5 kg for complete device incl. interchangeable unit (with empty reagent bottle, without magnetic stirrer or TM 235 KF)
Ambient conditions	Ambient temperature: +10 to +40 °C for operation and storage	Ambient temperature: +10 to +40 °C for operation and storage	Ambient temperature: +10 to +40 °C for operation and storage	Ambient temperature: +10 to +40 °C for operation and storage	Ambient temperature: +10 to +40 °C for operation and storage	Ambient temperature: +10 to +40 °C for operation and storage
Material: intelligent interchangeable units (5, 10, 20 and 50 ml)	Valve: PTFE/ETFE Cylinder: borosilicate glass 3.3 (DURAN®) Hoses: FEP, blue	Valve: PTFE/ETFE Cylinder: borosilicate glass 3.3 (DURAN®) Hoses: FEP, blue	Valve: PTFE/ETFE Cylinder: borosilicate glass 3.3 (DURAN®) Hoses: FEP, blue	Valve: PTFE/ETFE Cylinder: borosilicate glass 3.3 (DURAN®) Hoses: FEP, blue	–	Valve: PTFE/ETFE Cylinder: borosilicate glass 3.3 (DURAN®) Hoses: FEP, blue
Dosiing accury according DIN EN ISO 8655, part 3	Accuracy : 0.15 % Precision: 0.05-0.07 % (Depending on the used interchangeable unit)	Accuracy : 0.15 % Precision: 0.05-0.07 % (Depending on the used interchangeable unit)	Accuracy : 0.15 % Precision: 0.05-0.07 % (Depending on the used interchangeable unit)	Accuracy : 0.15 % Precision: 0.05-0.07 % (Depending on the used interchangeable unit)	–	Accuracy : 0.15 % Precision: 0.05-0.07 % (Depending on the used interchangeable unit)

# The right electrode for your titration application

The applicable electrode for the titration application is a decisive factor for the accuracy and reproducibility of the results. In order to support you with selecting the appropriate electrode, we have summarized the according electrodes for the most important applications in the following.



Application	Electrode (w.o. temp.-sensor)	Electrode with integrated. temp.-sensor
<b>Acid-base-titrations</b>		
Aqueous, general strong acid and bases	A 7780	A 7780 1M-DIN-ID
Kjeldahl	A 7780	A 7780 1M-DIN-ID
Alkalinity	N 62, N 61	A 162-2M-DIN-ID
Aqueous, difficult applications	IL-pH-A120MF IL-pH-A170MF	A 162-2M-DIN-ID
Low ionic liquids	IL-pH-A120MF IL-pH-A170MF	A 162-2M-DIN-ID
Small sample amounts	N 5900 A	A 157 IL-MICRO-pHT-A-DIN-N
Titration with sample changer (100-250 ml vessels)	N 65	N 1051 A IL-pHT-A170-DIN-N
Titration with sample changer (50 ml vessels, micro)	N 5900 A	-
<b>Non aqueous acid base-titrations</b>		
TAN (ASTM 664)	N 6480 eth	-
OH-No, NCO-No, FFA saponification No. ...	N 6480 eth	-
TBN (ISO 3771/ASTM 2896)	N 6480 eis	-
Epoxy value	N 6480 eis	-
Titration with perchloric acid/acetic acid	N 6480 eis	-
<b>Precipitation titrations</b>		
Halogenides (chloride, "salt")	AgCl 62, AgCl 62 RG	-
Halogenides, sample changer	AgCl 65, AgCl 62 RG	-
Pseudo halogenides (cyanide ...)	Ag 6280	-
Detergents	TEN 1100*	-
<b>Redox titrations</b>		
General, iodometric, permanganometric, cerimetric	Pt 62 Pt 6280	-
Iodine number, peroxid number	Pt 61	-
COD	Pt 61	-
Sample changer, general	Pt 6580	-
Sample changer, COD	Pt 5901	-
Dead stop (SO <sub>2</sub> bromine no. ...) general	Pt 1200	-
Dead stop (SO <sub>2</sub> bromine no. ...) sample changer, general and titration vessels	Pt 1400	-
Dead stop (SO <sub>2</sub> bromine no. ...) sample changer micro	KF 1100	-
KF-titrations	KF 1100	-
<b>Complexometric titrations</b>		
Water hardness (Ca/Mg separated)	Ca 1100 A*	-
Water hardness, total	Cu 1100 A*	-
Copper, zinc, nickel, alumina ...	Cu 1100 A*	-

\* An applicable reference electrode is required: B 2920+ respectively. B 3520+

## Ordering information: TITRONIC® 500, TitroLine® 6000/7000/7500 KF/7500 KF trace/7750

Type-no.	Order no.	Description
T 500-M1	285220210	TITRONIC® 500 basic unit with magnetic stirrer TM 235, with stand rod TZ 1510, electrode clamp Z 305, hand controller TZ 3880, power supply 100-240 V
T 500-M2/20	285220220	TITRONIC® 500 basic unit with magnetic stirrer TM 235 and 20 ml exchange unit WA 20, with stand rod TZ 1510, electrode clamp Z 305, hand controller TZ 3880, power supply 100-240 V
TL 6000-M1/10	285220050	TitroLine® 6000 basic unit with magnetic stirrer TM 235 and 10 ml exchangeable unit WA 10, with brown glass bottle for titrant, GL 45 and S 40-bottle adapter, tubes, drip tube and titration tip
TL 6000-M1/20	285220060	TitroLine® 6000 basic unit with magnetic stirrer TM 235 and 20 ml exchangeable unit WA 20, with brown glass bottle for titrant, GL 45 and S 40-bottle adapter, tubes, drip tube and titration tip
TL 6000-M1/50	285220070	TitroLine® 6000 basic unit with magnetic stirrer TM 235 and 50 ml exchangeable unit WA 50, with brown glass bottle for titrant, GL 45 and S 40-bottle adapter, tubes, drip tube and titration tip
TL 6000-M2/20	285220080	TitroLine® 6000 basic unit with magnetic stirrer TM 235 and 20 ml exchangeable unit WA 20, with brown glass bottle for titrant, GL 45 and S 40-bottle adapter, tubes, drip tube and titration tip. With pH-combination electrode and buffer set.
TL 6000-M2/50	285220090	TitroLine® 6000 basic unit with magnetic stirrer TM 235 and 50 ml exchangeable unit WA 20, with brown glass bottle for titrant, GL 45 and S 40-bottle adapter, tubes, drip tube and titration tip. With low maintenance pH-combination electrode A 7780-1M-DIN-ID and buffer set.
TL 7000-M1/10	285220140	TitroLine® 7000 basic unit with magnetic stirrer TM 235 and 10 ml exchangeable unit WA 10, with brown glass bottle for titrant, GL 45 and S 40-bottle adapter, tubes, drip tube and titration tip
TL 7000-M1/20	285220150	TitroLine® 7000 basic unit with magnetic stirrer TM 235 and 20 ml exchangeable unit WA 20, with brown glass bottle for titrant, GL 45 and S 40-bottle adapter, tubes, drip tube and titration tip
TL 7000-M1/50	285220160	TitroLine® 7000 basic unit with magnetic stirrer TM 235 and 50 ml exchangeable unit WA 50, with brown glass bottle for titrant, GL 45 and S 40-bottle adapter, tubes, drip tube and titration tip
TL 7000-M2/20	285220170	TitroLine® 7000 basic unit with magnetic stirrer TM 235 and 20 ml exchangeable unit WA 20, with brown glass bottle for titrant, GL 45 and S 40-bottle adapter, tubes, drip tube and titration tip. With pH-combination electrode and buffer set.
TL 7500 KF 05	285220810	Volumetric KF-Titrator, scope of supply: basic titrator unit, exchange unit WA 05, TM 235 KF titration stand with integrated stirrer and pump, titration vessel TZ 1770, micro double platinum electrode KF 1100 and starter kit, power supply 100-240 V
TL 7500 KF 10	285220820	Volumetric KF-Titrator, scope of supply: basic titrator unit, exchange unit WA 10, TM 235 KF titration stand with integrated stirrer and pump, titration vessel TZ 1770, micro double platinum electrode KF 1100 and starter kit, power supply 100-240 V
TL 7500 KF 20	285220830	volumetric KF-Titrator, scope of supply: basic titrator unit, exchange unit WA 20, TM 235 KF titration stand with integrated stirrer and pump, titration vessel TZ 1770, micro double platinum electrode KF 1100 and starter kit, power supply 100-240 V
TL 7500 KF trace M1	285220860	Module 1, coulometric KF-Titrator, scope of supply: basic titrator unit, generator electrode TZ 1752 without junction + connection cable, magnetic stirrer TM 235, stand rod, titration vessel TZ 1751, micro double platinum electrode KF 1150
TL 7500 KF trace M2	285220870	Module 2, coulometric KF-Titrator, scope of supply: basic titrator unit, generator electrode TZ 1752 without junction + connection cable, TM 235 KF titration stand with integrated stirrer and pump, stand rod, titration vessel TZ 1754, micro double platinum electrode KF 1150
TL 7500 KF trace M3	285220880	Module 3, coulometric KF-Titrator, scope of supply: basic titrator unit, generator electrode TZ 1753 with junction + connection cable, magnetic stirrer TM 235, stand rod, titration vessel TZ 1751, micro double platinum electrode KF 1150
TL 7500 KF trace M4	285220890	Module 4, coulometric KF-Titrator, scope of supply: basic titrator unit, generator electrode TZ 1753 with junction + connection cable, TM 235 KF titration stand with integrated stirrer and pump, stand rod, titration vessel TZ 1754, micro double platinum electrode KF 1150
TL 7750	285220240	Basic unit without magnetic stirrer, with stand rod; TZ 1510, electrode clamp Z 305, hand controller TZ 3880, power supply 100-240 V
TL 7750-M1	285220250	Basic unit with magnetic stirrer TM 2325, with stand rod; TZ 1510, electrode clamp Z 305, hand controller TZ 3880, power supply 100-240 V
TL 7750 KF 05	285220930	TitroLine® 7750 with KF accessories, scope of supply: basic titrator unit, exchange unit WA 05, TM 235 KF titration stand with integrated stirrer and pump, titration vessel TZ 1770, micro double platinum electrode KF 1100 and starter kit, power supply 100-240 V
TL 7750 KF 10	285220940	TitroLine® 7750 with KF accessories, scope of supply: basic titrator unit, exchange unit WA 10, TM 235 KF titration stand with integrated stirrer and pump, titration vessel TZ 1770, micro double platinum electrode KF 1100 and starter kit, power supply 100-240 V
TL 7750 KF 20	285220950	TitroLine® 7750 with KF accessories, scope of supply: basic titrator unit, exchange unit WA 20, TM 235 KF titration stand with integrated stirrer and pump, titration vessel TZ 1770, micro double platinum electrode KF 1100 and starter kit, power supply 100-240 V

## Accessories for TITRONIC® 500, TitroLine® 6000/7000/7500 KF/7500 KF trace/7750

Type-no.	Order no.	Description
WA 05	285220300	5 ml exchangeable unit with integrated chip for reagent data, with brown glass bottle for titrant, GL 45 and S 40-bottle adapter, tubes, drip tube and titration tip
WA 10	285220310	10 ml exchangeable unit with integrated chip for reagent data, with brown glass bottle for titrant, GL 45 and S 40-bottle adapter, tubes, drip tube and titration tip
WA 20	285220320	20 ml exchangeable unit with integrated chip for reagent data, with brown glass bottle for titrant, GL 45 and S 40-bottle adapter, tubes, drip tube and titration tip
WA 50	285220350	50 ml exchangeable unit with integrated chip for reagent data, with brown glass bottle for titrant, GL 45 and S 40-bottle adapter, tubes, drip tube and titration tip
TM 235, 115-230 V	285220400	Magnetic stirrer for vessels up to 500 ml, agitator speed infinitely adjustable from 500 - 2000 r/min, for the connection to TitroLine® 6000/7000 and TITRONIC® 500
TM 235 KF, 115-230 V	285220900	Titration stand with pump; Scope of delivery: Basic unit with 1 l DURAN®-reagent bottle TZ 1791, 1 l DURAN®-waste bottle TZ 1792, moisture bottle, tubes and screw threads, power supply TZ 1855 (110 to 240 V)
TZ 1052	285214721	KF-drying stove, 230 V
TZ 1055	285215183	KF-drying stove, 115 V
TZ 1060	285218115	Accessories set for KF drying stove TZ 1052/TZ1055
TZ 1065	285201973	Flowmeter with valve and hose connectors for gas volumes (air, nitrogen) from 50 - 500 ml/min.
TZ 3863	285220480	USB-thermo printer, 112 mm for TitroLine® 6000/7000/7500 KF/7500 KF trace/7750 and TITRONIC® 500
TZ 3864	285220710	Thermal paper for TZ 3863 with very high durability (5 rolls)
TZ 3865	285220440	DIN A4 standard printer, HP PCL-compatible, with USB-connection cable, 230 V

## Software TitrSoft 3.0

Type-no.	Order no.	Description
TZ 3071	285220717	Titration software for TitroLine® 7000, TitroLine® 7500 KF/7500 KF trace, TitroLine® 7750 and TitroLine® alpha plus
TZ 3072	285220727	Titration software like Version 3.0, but 21 CFR, part 11 compliant version

## Data cable

Type-no.	Order no.	Description
TZ 3840	285220690	USB-connection cable type A (M), USB type B (M), 1,8 m
TZ 3081	1007979	TW alpha plus, Mettler AB-S, PG - balances, 5 m
TZ 3082	1007977	TW alpha plus, Sartorius-balances, 5 m
TZ 3087	1007976	TitroLine® 7000, TitroLine® 7750, TITRONIC® 500 or TITRONIC® universal, TW 7400, 1,5 m
TZ 3091	285223504	TITRONIC® universal, TITRONIC® 500 TitroLine® easy, TitroLine® 6000, 7000, 7500 KF, 7500 KF trace, PC, 5 m
TZ 3092	285223529	TitroLine® 6000,7000, 7500 KF, 7500 KF trace, Sartorius balances
TZ 3094	285223545	TITRONIC® universal, TITRONIC® universal, TITRONIC® 500, TITRONIC® 500, TitroLine® 7000, TitroLine® 7000
TZ 3097	285223578	TITRONIC® universal, TITRONIC® 500 TitroLine® easy, TitroLine® 6000, 7000, 7500 KF, 7500 KF trace, PC 1,5 m
TZ 3099	285223594	TitroLine® 6000,7000, 7500 KF, 7500 KF trace, Mettler AB-S, PG - balances, 1,5 m
TZ 3987	285217860	TitroLine® 7000, TitroLine® 7750, TITRONIC® 500 or TITRONIC® universal, TW 7400, 1,5 m



# WolfLabs

**Pricing on any accessories shown can be found by keying the part number into the search box on our website.**

The specifications listed in this brochure are subject to change by the manufacturer and therefore cannot be guaranteed to be correct. If there are aspects of the specification that must be guaranteed, please provide these to our sales team so that details can be confirmed.

**[www.wolflabs.co.uk](http://www.wolflabs.co.uk)**

**Tel : 01759 301142**

**Fax : 01759 301143**

**[sales@wolflabs.co.uk](mailto:sales@wolflabs.co.uk)**

Please contact us if this literature doesn't answer all your questions.