

work **in** style  
est. 1935



## TOP BRANDS



# work in style

est. 1935

*Work in Style has been supplying healthcare market for over 80 years and has been an approved NHS supplier for over 69 years. Our clients include NHS, Private Medical, Dental and Universities.*

We provide uniforms that are of the highest standard and have reflected that in this wonderful collection that we have put together. It has a stylish and modern feel to it using the finest tried and tested fabrics to give you the assurance of quality. Added to this, we use branded collections from our partners to give you a full range of uniforms to choose from, ensuring a complete 'one stop shop' to support your needs. In addition to this we offer a personal design service. We can produce bespoke garments in all ranges to ensure that unique personal touch.

work in style  
est. 1935



## The perfect partnership, Work in Style and P&R...

Work in Style and P&R Fabrics formed a formidable partnership in 2016. This partnership has strengthened our position in the market place giving us more control and influence. We now have a fully vertical operation able to control our fabric supply and manufacturing to the end user. This partnership will allow us to take our business forward in this competitive market performing to our key strengths.

## Work in Style's philosophy is simple...

*'We focus on customer satisfaction and quality service to forge a successful business partnership. Our aim is to provide high quality products at competitive prices in a way which suits you and your business.'*



# Reliable and durable Lab Coats...

Suitable for a multitude of laboratory and pharmacy roles.

- **Female Styles**
- **Male Styles**
- **Unisex Styles**
- **Poly/Cotton**
- **Hard Wearing**



**Easy  
Care**



**Best  
Seller**



**Durable**



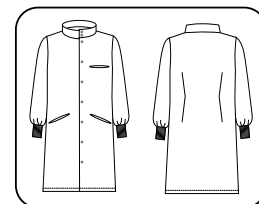
**Wash  
Temp.**

**workinstyle**  
est. 1935



### EEHWC - Howie Unisex Lab Coat

- Three pockets, one jetted chest pocket with two jetted hip pockets
- Offset nine stud fastening with broad underlay to avoid gaping
- Knitted cuffs
- Back darts



Gender: Unisex

Sizes: Chest 30" - 54" Length: (R) 42", (T) 44", (XT) 46"

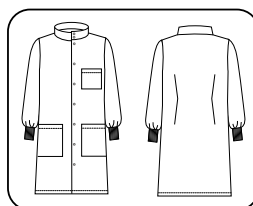
Fabric: Polyester/Cotton

Weight: White 245gsm, Colours 195gsm



### EEHSC - Howie Unisex Science Coat

- Three patch pockets, one chest pocket with two hip pockets
- Offset nine stud fastening with broad underlay to avoid gaping
- Knitted cuffs
- Back darts



Gender: Unisex

Sizes: Chest 30" - 54" Length: (R) 42", (T) 44", (XT) 46"

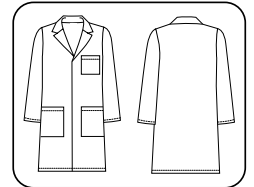
Fabric: Polyester/Cotton Weight: 245gsm



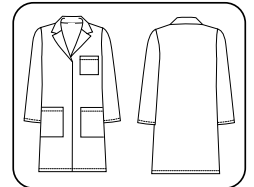


### EEUNC - Mens Lab Coat

### EEWMC - Ladies Lab Coat



- Three patch pockets, one chest pocket with two hip pockets
- Concealed stud front fastening



**EEUNC** - Chest Size: 32" - 54"  
Back vent, Regular Length - 42"

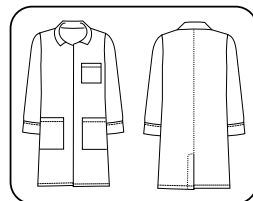
**EEWMC** - Bust Size: 30" - 52"  
One piece back, Regular Length - 42"

Fabric: Polyester/Cotton Weight: 195gsm



### EEFRLC - Flame Retardant Lab Coat

- Made from Flame Retardant Cotton
- Stud fastening to neck and sleeve hems
- Three patch pockets, one chest pocket with two hip pockets
- Back vent



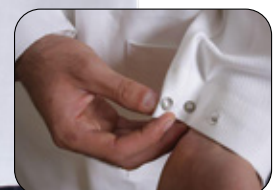
Gender: Unisex

Sizes: XS - 2XL Length: (R) 42"

Fabric: Probanised Cotton Weight: 220gsm

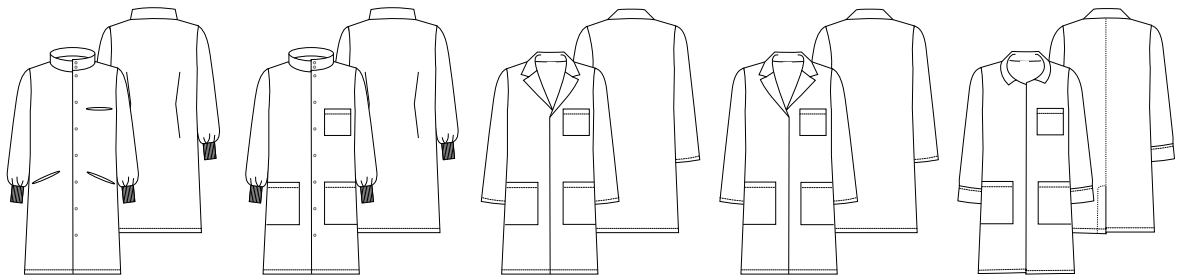


**PROBAN**<sup>®</sup>





## Lab Coat Range Colour and Style Matrix



**EEHWC**  
Howie Unisex  
Lab Coat

Chest Size 30"-54"  
(R) 42" (T) 44" (XT) 46"

**EEHSC**  
Howie Unisex  
Science Coat

Chest Size 30"-52"  
(R) 42" (T) 44" (XT) 46"

**EEUNC**  
Men's  
Lab Coat

Chest Size 32"-54"  
(R) 42"

**EEWMC**  
Ladies  
Lab Coat

Bust Size 30"-52"  
(R) 42"

**EEFRLC**  
Flame Retardant  
Lab Coat

XS-2XL  
(R) 42"

White					
Bottle Green					
Navy					
Pale Blue					
Purple					
Red					
Royal Blue					
Silver					
Yellow					

### Lab Coat Sizing

#### Size Chart for EEHWC, EEHSC, EEUNC & EEWMC

Chest inches	30	32	34	36	38	40	42	44	46	48	50	52	54
Chest cm	76	84	88	92	96	100	108	112	116	124	128	132	140

#### Size Chart for EEFRLC

Call Size	XS		S		M		L		XL		2XL	
Chest inches	30	32	34	36	38	40	42	44	46	48	50	52
Chest cm	76	84	88	92	96	100	108	112	116	124	128	132

#### Lengths Available by Product

EEHSCR Regular - 42"

EEHSCT Tall - 44"

EEHSCXT Xtra Tall - 46"

EEHWCR Regular - 42"

EEHWCT Tall - 44"

EEHWCTXT Xtra Tall - 46"

EEUNC Regular - 42"

EEWMC Regular - 42"

EEFRLC Regular - 42"



# WolfLabs

**Pricing on any accessories shown can be found by keying the part number into the search box on our website.**

The specifications listed in this brochure are subject to change by the manufacturer and therefore cannot be guaranteed to be correct. If there are aspects of the specification that must be guaranteed, please provide these to our sales team so that details can be confirmed.

**[www.wolflabs.co.uk](http://www.wolflabs.co.uk)**

**Tel : 01759 301142**

**Fax : 01759 301143**

**[sales@wolflabs.co.uk](mailto:sales@wolflabs.co.uk)**

Please contact us if this literature doesn't answer all your questions.