



Inheriting the Classics and Striving for New Heights of Excellence

The legendary “Vortex-Genie” you trust is now part of OHAUS! As a global leader in instruments and equipment, we assure you that the performance and quality of the Vortex-Genie will remain exceptional, and we will continuously strive to provide you with an outstanding experience. Additionally, we will empower this legend with the OHAUS advantages of Trust, Agility, Ingenuity, and Commitment, offering you greater value and superior products.

Unique Features:

- **The Comprehensive Collection to Fit Every Need**

Vortex-Genie 2 offers variable speeds for precise mixing; the 2T adds a programmable timer for auto stops; the Digital ensures accuracy and repeatability; the Pulse provides adjustable RUN/STOP time.

- **GENIE™ - The Brand You Know and Trust for Your Laboratory**

Proven to operate for decades, the Vortex-Genie’s solid build and robust design ensures reliable performance across diverse application environments.

- **Mixing from Micro to Bulk**

It features 30+ accessories and quick-change capability, enabling mixing from small tubes to large vessels.

VORTEX-GENIE™

Specifications

Model	Vortex-Genie 2	Vortex-Genie 2T	Digital Vortex-Genie 2	ABI Digital Vortex-Genie 2	Vortex-Genie Pulse
Control	Analog			Digital	
Display	-			Red LED	
Working Mode	Touch, Hands Free				Hands Free, Pulse
Accessories Included	3-inch Platform, Pop-off Cup			Applied Biosystem's 96/384-Well Microplate Adaptor	3-inch Platform, Pop-off Cup
Speed Range	600 rpm - 3200 rpm 600 rpm - 2700 rpm (for 50Hz models)		500 rpm - 3000 rpm 500 rpm - 2850 rpm (for 50Hz models)		
Orbit	4 mm		3.5 mm		3 mm
Timer	-	1-60 seconds; 1-60 minutes	1-99 seconds; 1-99 minutes		1-99 minutes
Pulse - ON/OFF Time	-				0.1 second - 99 minutes
Safety Certification	CE; ETL				
Power	120V, 0.65A, 60Hz 230V, 0.5A, 50Hz 100V, 1.0A, 50Hz		120V, 0.65A, 60Hz 230V, 0.5A, 50Hz 100V, 1.0A, 50/60Hz		
Dimensions (L x W x H)	165 x 122 x 165 mm				
Net Weight	4 kg				
Working Environment	0°C - 38°C, 95%RH, non-condensing				

Accessories



83041239 (REF #: SI-V525)

Vertical 50ml, 15ml,
Microtube Holder



83041240 (REF #: SI-V524)

Vertical Microtube Holder



83041241 (REF #: SI-V512)

Vertical 15ml Tube Holder
(12 clip)



83041242 (REF #: SI-V506)

Vertical 50ml Tube Holder



83041243 (REF #: SI-V209)

Vertical High Speed
Microtube Holder



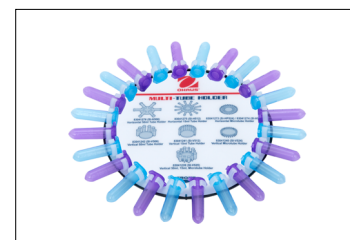
83041244 (REF #: SI-V206)

Vertical High Speed 15ml Tube
Holder



83041245 (REF #: SI-V203)

Vertical High Speed 50ml Tube
Holder



83041273 (REF #: SI-HP524)

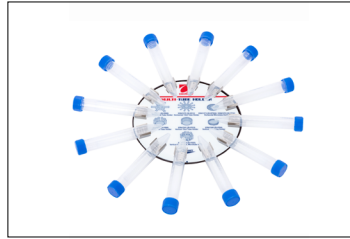
Horizontal Plastic Clip
Microtube Holder

VORTEX-GENIE™



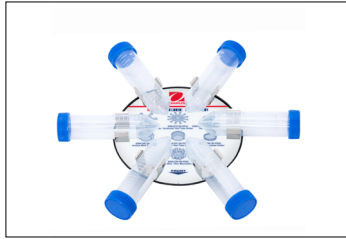
83041274 (REF #: SI-H524)

Horizontal Microtube Holder



83041275 (REF #: SI-H512)

Horizontal 15ml Tube Holder



83041276 (REF #: SI-H506)

Horizontal 50ml Tube Holder



83041389 (REF #: SI-0570)

Small Ampule/Tube Attachment



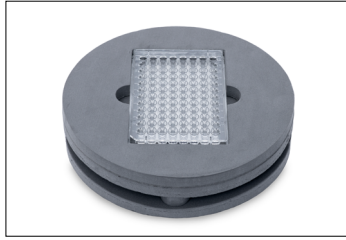
83041390 (REF #: SI-0564)

TurboMix Attachment



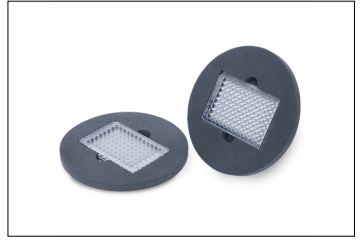
83041391 (REF #: SI-0511)

Large Ampule/Tube Attachment



83041392 (REF #: SI-0510)

Two-Tier Microplate Foam Insert



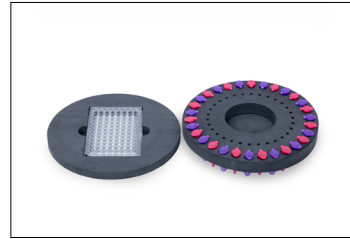
83041417 (REF #: 504-0235-00)

Inserts for 96 Micro Well Plate (2)



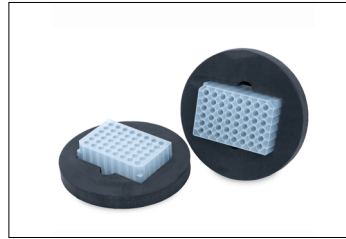
83041418 (REF #: 504-0234-00)

Inserts for 60 Micro Tubes (2)



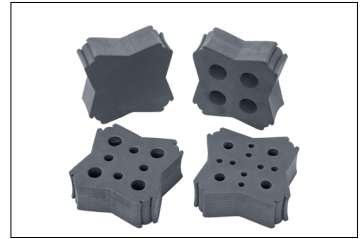
83041419 (REF #: 504-0233-00)

H301 - Multiple Sample Head Starter Set



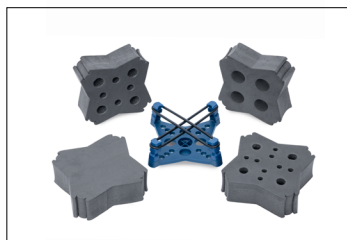
83041420 (REF #: 504-0232-00)

Deepwell Microplate Foam Insert (2)



83041421 (REF #: 503-0283-00)

Assorted Tube Inserts for H302 (4)



83041422 (REF #: 503-0282-00)

H302 - Large Sample Set



83041423 (REF #: OK-0500-902)

3" Platform Head With Rubber Cover Kit



83041428 (REF #: 146-6005-00)

6" Platform Head



83041429 (REF #: 503-0279-00)

14-29mm Tube Inserts (2)



83041430 (REF #: 503-0280-00)

29-37mm Tube Inserts (2)



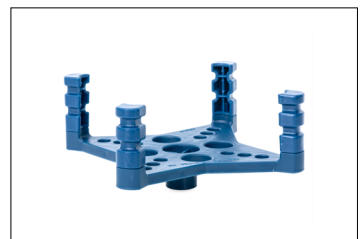
83041431 (REF #: 503-0278-00)

9-16mm Tube Inserts (2)



83041432 (REF #: 503-0277-00)

Blank Inserts (2)



83041433 (REF #: 504-0039-00)

Recessed Platform Head, Complete

VORTEX-GENIE™

			
83041434 (REF #: 568-0001-00)	83041438 (REF #: 146-3011-00)	83041441 (REF #: 0K-0236-408)	83041442 (REF #: 580-2013-00)
Elastic Bands (2)	Pop-Off Cup Head	Molded Bottom Closure And Screws Kit, Re	Rubber Cover For 3" Head
			
83041467 (REF #: SI-0565)	83041468 (REF #: SI-0513)	83041475 (REF #: 0K-0500-901)	
Universal Microtube Holder	MicroPlate Adaptor Kit for Applied Bio S	3 inch Platform Head, without rubber cover	

Other Features and Equipment

Zinc-casted housing with “no-walking feet” design, pop-off cup, 3-inch platform with rubber cover, adjustment knob(s) with dial markings for analog models, or LED displays for digital models, hands-free or touch on control, countdown timer, cold room and incubator compatible. Specially configured model for the applied biosystems protocol, featuring an attachment for holding half-skirted and unskirted PCR plates.

Compliance

- **Product Safety:** IEC/EN 61010-1; IEC/EN 61010-2-051; CAN/CSA C22.2 61010-1-12; CAN/CSA C22.2 61010-2-051; UL 61010-1; UL 61010-2-051
- **Electromagnetic Compatibility:** IEC/EN 61326-1 Class A, Industrial environments; Canada ICES-003 Class A; FCC Part 15 Class A
- **Compliance Marks:** ETL; CE; RCM; WEEE



MULTI-FUNCTION INCUBATOR GENIE™

Refrigerate, Heat, Rotate, Rock, Stir, and Shake All in ONE Compact Benchtop Equipment!

Genie Incubators offer precise, uniform temperature control for demanding incubation and refrigeration tasks without requiring bench space. Control the temperature, rotation speed, rocking speed, and shaking speed. The multiple-stage control enables you to create custom protocols for multiple or all steps in your experiments. Our custom magnets, covers and optional motor assemblies make the GENIE an exceptional incubator and workstation.

Unique Features:

- Designed for Precision: Built for versatility. Speed 100 RPM.
- Compliance: Compact design with an analog, LED, or digital display offers uniform compliance with IEC, EN, CE, FCC, and other regulatory agencies, testing and other standards.
- Design: Magnetic angle system offers Unlimited Configurations and Flexibility. Multi-use tilt plate and angle hold a wide variety of tubes, flasks, microplates, bags, and cell-culture vessels. Tilt angle is the magnetic platform at an angle in any combination.
- Visual Control and Operation: Intuitive display.

Model 83041434 (REF #: 568-0001-00) and Model 83041438 (REF #: 146-3011-00) are available. For more information, visit www.ohaus.com/genie.



2 Block Dry Block Heaters

Variable Block Heaters Designed for Everyday Use with Accessories for Fancy Applications!

Variable Dry Block Heaters are easy to use, accurate, and require no maintenance. An auto hold feature allows you to hold a sample at a specific temperature for a set period of time. The heaters are designed for use in a laboratory or industrial setting. They are available in two models: a standard model and a digital model. The digital model offers exceptional temperature uniformity and stability for reproducible results, while the standard model is an economical choice.

Unique Features:

- Three models to customize your application. All models offer exceptional temperature uniformity with outstanding temperature stability.
- Auto hold feature to ensure reproducible, reliable results. The auto hold feature allows you to hold a sample at a specific temperature for a set period of time.
- Accurate temperature accuracy. Digital models include a simple single point calibration feature to ensure the most accurate results. The standard model is available for 3 temperature setpoints.





WolfLabs

Pricing on any accessories shown can be found by keying the part number into the search box on our website.

The specifications listed in this brochure are subject to change by the manufacturer and therefore cannot be guaranteed to be correct. If there are aspects of the specification that must be guaranteed, please provide these to our sales team so that details can be confirmed.

www.wolflabs.co.uk

Tel : 01759 301142

Fax : 01759 301143

sales@wolflabs.co.uk

Please contact us if this literature doesn't answer all your questions.