

INSTRUCTION MANUAL

HI190 - HI200 Magnetic Stirrers



Thank You

Thank you for choosing a Hanna Instruments product. Please read this instruction manual carefully before using the instrument.

For more information about Hanna Instruments and our products, visit www.hannainst.com.

For technical support, contact your local Hanna Instruments Office or e-mail us at tech@hannainst.com.

Find your local Hanna Instruments Office on www.hannainst.com.

PRELIMINARY EXAMINATION

Remove the instrument from the packing material and examine it carefully to make sure that no damage has occurred during shipping. If there is any damage, please contact your local Hanna Instruments Office.

Note: Save all packing material until you are sure that the instrument functions correctly. All defective items must be returned in the original packing with the supplied accessories.

GENERAL DESCRIPTION

HI190M, HI190M-0 and HI200M are compact and lightweight magnetic stirrers. They incorporate an electronic control that allows the user to regulate the speed with great precision.

HI190M and HI190M-0 have a plastic cover that will resist the harmful effects of chemicals that are accidentally spilled.

HI200M is provided with an AISI 316 stainless steel cover. This model is ideal for applications that involve exothermic reactions.

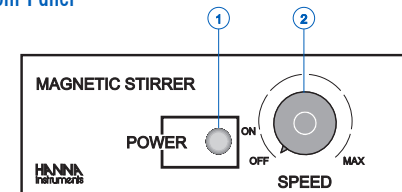
Each stirrer is supplied complete with a PTFE coated magnetic stir bar (L 25 x dia 7 mm).

SPECIFICATIONS

Max Stirring Capacity	1 liter (0.26 gallons)
Speed Range	100 rpm (min)/ 1000 rpm (max)
Power Supply	
HI190M-0	12 Vdc
HI190M-1	110/ 115 Vac, 50/ 60 Hz
HI190M-2	220/ 240 Vac, 50/ 60 Hz
HI200M-1	110/ 115 Vac, 50/ 60 Hz
HI200M-2	220/ 240 Vac, 50/ 60 Hz
Installation Category	II
Cover Material	
HI190M	ABS plastic
HI190M-0	ABS plastic
HI200M	AISI 316 stainless steel
Environment	0 to 50 °C (32 to 122 °F); RH max 95% non-condensing
Dimensions	120 x 120 x 45 mm (4.7 x 4.7 x 1.8")
Weight	
HI190M	640 g (1.4 lb.)
HI190M-0	610 g (1.3 lb.)
HI200M	710 g (1.6 lb.)

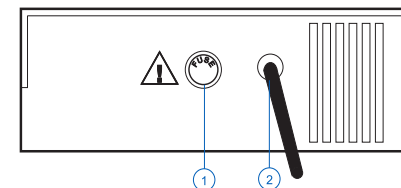
FUNCTIONAL DESCRIPTION

Front Panel



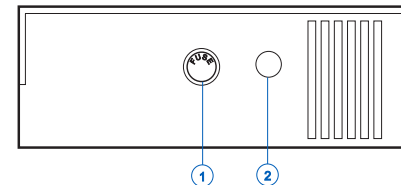
- 1) Power indicator (LED lights up when the stirrer is powered)
- 2) ON/ OFF/ Speed knob, to turn the stirrer ON and OFF, and set the stirring speed (continuously variable up to the maximum)

Rear Panel of HI190M and HI200M



- 1) Fuse holder for 400 mA/ 250 V fuse
- 2) AC power cord

Rear Panel of HI190M-0

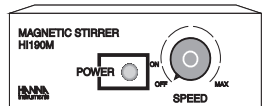


- 1) Fuse holder for 400 mA/ 250 V fuse
- 2) DC power socket for 12 Vdc adapter

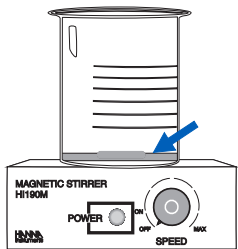
 Always unplug the stirrers before replacing the fuse.

OPERATIONAL GUIDE

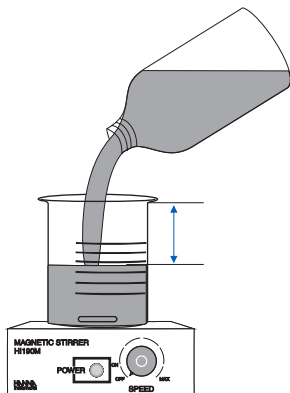
- Make sure that the SPEED knob is in the OFF position.



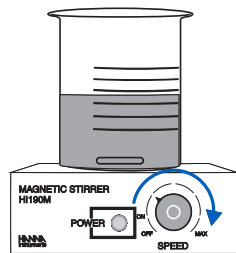
- Place a beaker or glass container on the top of the stirrer and place the stirring bar at the center of the beaker base.



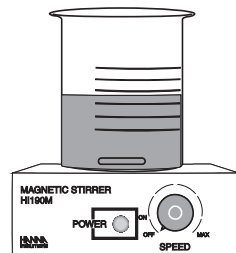
- Pour the liquids to be mixed into the beaker. Do not fill to the brim and leave sufficient space to prevent spillage during stirring.



- Connect the power cord to the mains.
- Adjust the SPEED knob slowly until the required stirring speed is achieved.



- Allow sufficient time for the mixing operation to attain uniform rotational flow.
- After stirring is completed, turn the SPEED knob to OFF position.



- If no further stirring is required, disconnect the power supply.

ACCESSORIES

HI710005	115 Vac to 12 Vdc power adapter, US plug
HI710006	230 Vac to 12 Vdc power adapter, European plug
HI731319	Micro stir bar (10 pcs.)

RECOMMENDATIONS FOR USERS

Before using this product, make sure it is entirely suitable for your specific application and for the environment in which it is used.

Any variation introduced by the user to the supplied equipment may degrade the meters' performance.

For yours and the meters' safety do not use or store the meter in hazardous environments.

WARRANTY

HI190 and HI200 are guaranteed for two years against defects in workmanship and materials when used for their intended purpose and maintained according to instructions.

This warranty is limited to repair or replacement free of charge.

Damage due to accidents, misuse, tampering or lack of prescribed maintenance is not covered. If service is required, contact your local Hanna Instruments Office.

If under warranty, report the model number, date of purchase, serial number and the nature of the problem.

If the repair is not covered by the warranty, you will be notified of the charges incurred.

If the instrument is to be returned to Hanna Instruments, first obtain a Returned Goods Authorization number from the Technical Service department and then send it with shipping costs prepaid. When shipping any instrument, make sure it is properly packed for complete protection.

All rights are reserved. Reproduction in whole or in part is prohibited without the written consent of the copyright owner.

Hanna Instruments reserves the right to modify the design, construction or appearance of its products without advance notice.



WolfLabs

Pricing on any accessories shown can be found by keying the part number into the search box on our website.

The specifications listed in this brochure are subject to change by the manufacturer and therefore cannot be guaranteed to be correct. If there are aspects of the specification that must be guaranteed, please provide these to our sales team so that details can be confirmed.

www.wolflabs.co.uk

Tel : 01759 301142

Fax : 01759 301143

sales@wolflabs.co.uk

Please contact us if this literature doesn't answer all your questions.