

diagenode

A Hologic Company

Megaruptor[®]: Your partner in long-read sequencing

Designed to provide simple and automated **DNA sample preparation**, the Megaruptor gives state-of-the-art shearing performance which is independent of the source, concentration, temperature, or salt content of a DNA sample, providing researcher with ultimate flexibility and ease of use. The shearing with the Megaruptor leads to optimal long-read sequencing using **PacBio[®]**, and **Oxford Nanopore[™]** technologies.

Recommended by  PACBIO[®]

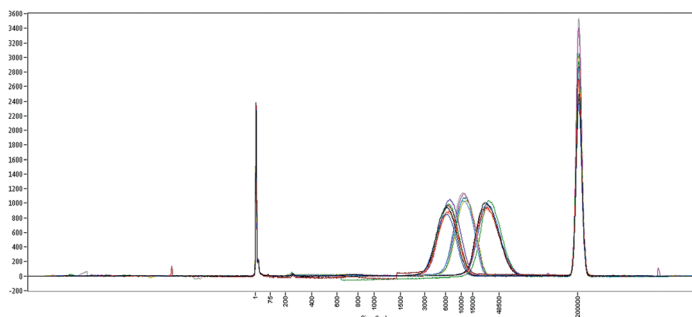


The NEW Megaruptor 3

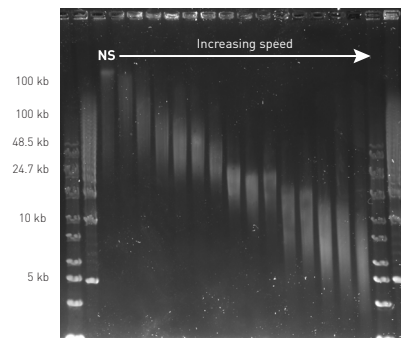
- **High throughput:** Processes **1 to 8 samples** simultaneously.
- **Automated:** Operates without user input and is easily tuneable to between **5 and 100 kb**.
- **Unmatched quality:** Provides the **tight fragment distribution** you need.
- **Safe from contamination and clogs:** Uses optimized consumables.
- **Ergonomic and space-efficient**

Excellent reproducibility and size distribution achieved with the Megaruptor 3

A. Reproducibility and size distribution



B. Versatile fragment range



A: Fragment Analyzer profiles of human genomic DNA samples (25 ng/μl; 200 μl/sample) sheared to 6, 10 and 30 kb. **B:** DNA samples sheared at different speed settings were analyzed by Pulsed Field Gel Electrophoresis (PFGE) in 1% agarose gel. (NS: Not Sheared)

Megaruptor technical specifications



	Megaruptor 3 Cat. No. B06010003	Megaruptor 2 Cat. No. B06010002
Size range	5 - 100 kb	3 - 75 kb
Volume range	65 – 500 μl	50 – 400 μl
Concentration range	0 – 150 ng/μl	0 – 50 ng/μl
Throughput	1 to 8 samples in parallel	1 to 2 samples in series
Touch screen	✓	✓
Eliminate cross-contamination	with disposable elements in a completely closed-system	with disposable elements and with washing sequences
Multiple-orifice disposables	✓	✓
Consumables	Megaruptor 3 Shearing Kit : Cat. No. E07010003	Hydropore - short: Cat. No. E07010001 Hydropore - long: Cat. No. E07010002 Hydro Tubes: Cat. No. C30010018



WolfLabs

Pricing on any accessories shown can be found by keying the part number into the search box on our website.

The specifications listed in this brochure are subject to change by the manufacturer and therefore cannot be guaranteed to be correct. If there are aspects of the specification that must be guaranteed, please provide these to our sales team so that details can be confirmed.

www.wolflabs.co.uk

Tel : 01759 301142

Fax : 01759 301143

sales@wolflabs.co.uk

Please contact us if this literature doesn't answer all your questions.