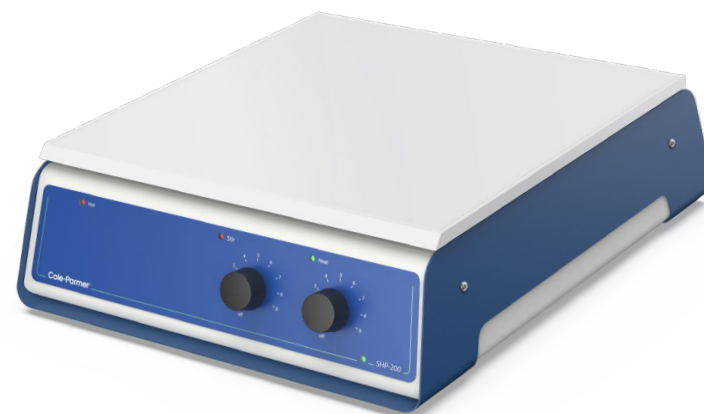
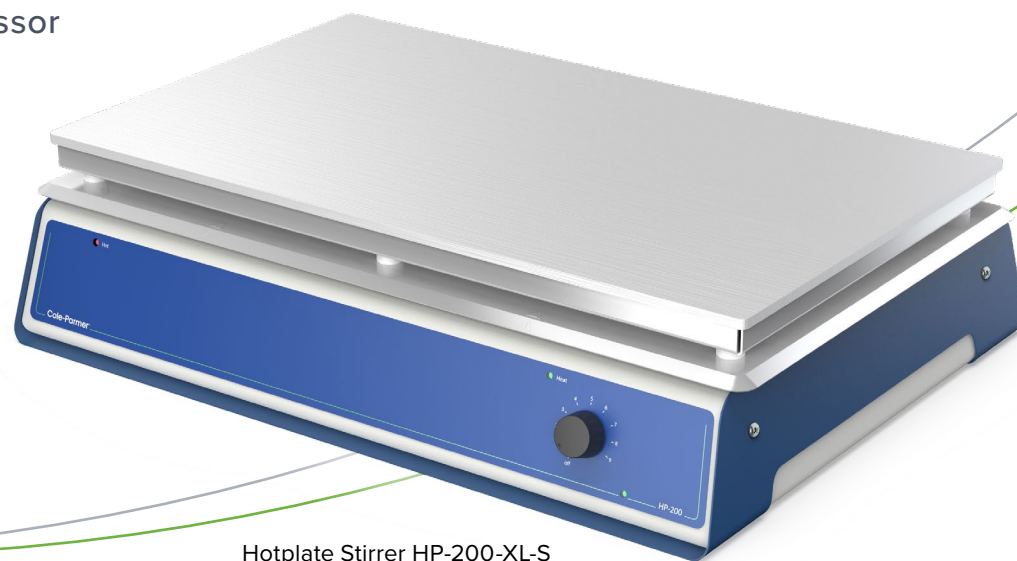


## Cole-Parmer® Large Capacity Hot Plates and Stirrers

- 30 x 30cm (12" x 12"), and 30 x 50cm (12" x 20")
- Analog, Digital and Infrared, depending on model
- Choice of plate material, depending on model
- All units incorporate the latest technology, microprocessor controlled, dual thermocouples to ensure accurate temperature control and over temperature protection
- Biocote® anti-microbial protection
- LED temperature indicator
- Hot warning light, remains active even when unplugged
- Now includes a 120V variant across the range



Hotplate Stirrer SHP-200-L-C



Hotplate Stirrer HP-200-XL-S

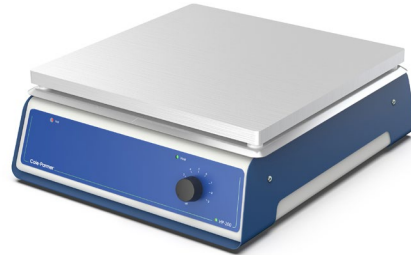
# Cole-Parmer® Large Capacity Hot Plates HP-200 Series - Analog

## Features:

- Easy to use temperature control dial
- Choice of top plate material
  - glass ceramic – provides excellent chemical resistance, high plate temperatures, easy to clean
  - aluminum/silicon alloy – rapid heating and even temperature distribution across whole plate
- Large square plate area ideal for heating one large vessel or several smaller ones 30 x 50cm can accommodate up to 30 x 100mL beakers
- Hot warning light, remains active even when unplugged while above 50°C
- 30 x 30cm (12" x 12")
  - 04807-66-67 – ceramic, max temp 450°C
  - 04807-68-69 – aluminum, max temp 300°C
- 30 x 50cm (12" x 20")
  - 04807-70 – ceramic, max temp 375°C
  - 04807-72-73 –aluminum, max temp 375°C



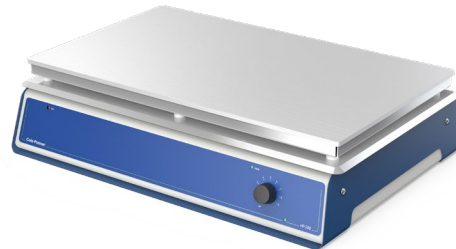
HP-200-L-C  
230V: 04807-66  
120V: 04807-67



HP-200-L-S  
230V: 04807-68  
120V: 04807-69



HP-200-XL-C  
230V: 04807-70



HP-200-XL-S  
230V: 04807-72  
120V: 04807-73

# Cole-Parmer® Large Capacity Hot Plates HP-200 Series - Digital

## Features:

- Digital setting and control of plate temperature
- Accurate temperature control by microprocessor
- Aluminum top plate material
  - even plate temperatures and uniform heating conditions
- Large square plate area ideal for heating one large vessel or several smaller ones
  - 30 x 50cm can accommodate up to 30 x 100mL beakers
- Hot warning light, remains active even when unplugged while above 50°C
- 30 x 30cm (12" x 12")
  - 04807-80-81 – aluminum, max temp 300°C
- 30 x 50cm (12" x 20")
  - 04807-82-83 –aluminum, max temp 300°C



HP-200D-L-S  
230V: 04807-80  
120V: 04807-81



HP-200D-XL-S  
230V: 04807-82  
120V: 04807-83



HP-200-IR-L  
230V: 04807-84  
120V: 04807-85

## Cole-Parmer® Large Capacity Hot Plates HP-200 Series - Infrared

### Features:

- Easy to use temperature control dial
- Infrared heater is efficient and saves time and energy
  - even plate temperatures and uniform heating conditions
- Ideal for heating large volumes of liquid
- Chemically resistant ceramic top
- Hot warning light, remains active even when unplugged while above 50°C
- 30 x 30cm (12" x 12")



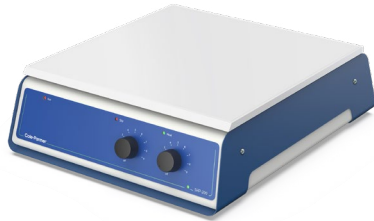
ST-200-L-S  
230V: 04807-74  
120V: 04807-75

## Cole-Parmer® Large Capacity Stirrers ST-200 Series

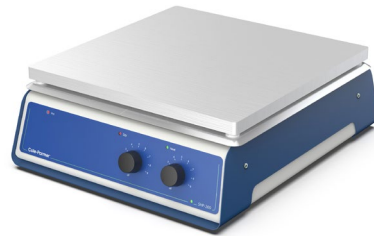
### Features:

- Easy to use temperature control dial
- Powerful magnetic drive with electronic feed-back speed control accurately maintains the set speed
- Powerful magnets for strong magnetic coupling
- Easily stirs up to 30 liters
- Robust, durable construction with stainless steel top
- 30 x 30cm (12" x 12")

## Cole-Parmer® Large Capacity Stirrer/ Hot Plates SHP-200 Series - Analog



SHP-200-L-C  
230V: 04807-76  
120V: 04807-77



SHP-200-L-S  
230V: 04807-78  
120V: 04807-79

### Features:

- Easy to use temperature and stirring control dials
- Choice of top plate material
  - glass ceramic – provides excellent chemical resistance, high plate temperatures, easy to clean
  - aluminum/silicon alloy – rapid heating and even temperature distribution across whole plate
- Large square plate area ideal for handling large vessel
- Powerful stirring action – volumes up to 15 Liters
- Independent safety circuit to protect against overheating
- Hot warning light, remains active even when unplugged while above 50°C
- 30 x 30cm (12" x 12")
  - 04807-76-77 – ceramic, max temp 450, stirring 100 – 1500 rpm
  - 04807-78-79 – aluminum, max temp 300, stirring 100 – 1500 rpm



SHP-200-IR-L  
230V: 04807-86  
120V: 04807-87

## Cole-Parmer® Large Capacity Stirrer/ Hot Plates SHP-200 Series - Infrared

### Features:

- Easy to use temperature control dial
- Powerful magnetic drive with electronic feed-back speed control accurately maintains the set speed
- Powerful magnets for strong magnetic coupling
- Easily stirs up to 30 liters
- Robust, durable construction with stainless steel top
- 30 x 30cm (12" x 12")

## Technical Specification

Specification	HP-200-L-C	HP-200-L-S	HP-200-XL-C	HP-200-XL-S	ST-200-L-S	SHP-200-L-C	SHP-200-L-S	SHP-200-L-S	HP-200D-XL-S	HP-200-IR-L	SHP-200-IR-L
Plate material	Glass ceramic	Al/Si alloy	Glass ceramic	Al/Si alloy	Stainless steel	Glass ceramic	Al / Si alloy	-	-	-	-
Plate dimensions, mm	300 x 300	300 x 300	300 x 500	300 x 500	300 x 300	300 x 300	300 x 300	300 x 300	300 x 500	300 x 300	300 x 300
Heated area, mm	200 x 200	300 x 300	250 x 450	300 x 500	-	200 x 200	300 x 300	-	-	140 diameter	140 diameter
Heater power, W	1200	600	2250	1500	-	1200	600	600	1500	900	900
Max. plate temp. °C	450	300	375	300	-	450	300	300	300	-	-
Speed range, rpm	-	-	-	-	100 x 600	100 to 1500	100 to 1500	-	-	-	100 to 1500
Max.stirring capacity, litres	-	-	-	-	30	15	15	-	-	-	-
Dimensions, mm (w x d x h)	320 x 370 x 120	320 x 370 x 120	560 x 360 x 130	520 x 360 x 130	328 x 369 x 103	300 x 365 x 105	300 x 365 x 105	300 x 365 x 105	520 x 360 x 130	300 x 365 x 105	300 x 365 x 105
Net weight, kg	6	6	12	12	5	7	7	6	12	4	4
Electricity supply	230V, 50-60Hz	230V, 50-60Hz	230V, 50Hz	230V, 50Hz	230V, 50Hz, 50W	230V, 50Hz	230V, 50Hz	230V, 50Hz	230V, 50Hz	230V, 50Hz,	230V, 50Hz,
IP Rating	31	31	-	-	-	-	-	-	-	-	-

## Ordering Information

Description	Ordering Number	Series No.	Model No.	Legacy Sku.
Ceramic, Analogue, 30x30cm Hotplate, 230V	04807-66	HP-200	HP-200-L-C	CB300
Ceramic, Analogue, 30x30cm Hotplate, 120V	04807-67	HP-200	HP-200-L-C-120	CB300/120V/60
Metal, Analogue, 30x30cm Hotplate, 230V	04807-68	HP-200	HP-200-L-S	SB300
Metal, Analogue, 30x30cm Hotplate, 120V	04807-69	HP-200	HP-200-L-S-120	SB300/120V/60
Ceramic, Analogue, 30x50cm Hotplate, 230V	04807-70	HP-200	HP-200-XL-C	CB500
Metal, Analogue, 30x50cm Hotplate, 230V	04807-72	HP-200	HP-200-XL-S	SB500
Metal, Analogue, 30x50cm Hotplate, 120V	04807-73	HP-200	HP-200-XL-S-120	SB500/120V/60
Metal, Analogue, 30x30cm Stirrer, 230V	04807-74	ST-200	ST-200-L-S	SB301
Metal, Analogue, 30x30cm Stirrer, 120V	04807-75	ST-200	ST-200-L-S-120	SB301/120V/60
Ceramic, Analogue, 30x30cm Hotplate/Stirrer, 230V	04807-76	SHP-200	SHP-200-L-C	CB302
Ceramic, Analogue, 30x30cm Hotplate/Stirrer, 120V	04807-77	SHP-200	SHP-200-L-C-120	CB302/120V/60

## Ordering Information - continued

Description	Ordering Number	Series No.	Model No.	Legacy Sku.
Metal, Analogue, 30x30cm Hotplate/Stirrer, 230V	04807-78	SHP-200	SHP-200-L-S	SB302
Metal, Analogue, 30x30cm Hotplate/Stirrer, 120V	04807-79	SHP-200	SHP-200-L-S-120	SB302/120V/60
Metal, Digital, 30x30cm Hotplate, 230V	04807-80	HP-200D	SHP-200-L-S	SD300
Metal, Digital, 30x30cm Hotplate, 120V	04807-81	HP-200D	HP-200D-L-S-120	SD300/120V/60
Metal, Digital, 30x50cm Hotplate, 230V	04807-82	HP-200D	HP-200D-XL-S	SD500
Metal, Digital, 30x50cm Hotplate, 120V	04807-83	HP-200D	HP-200D-XL-S-120	SD500/120V/60
Infrared Hotplate, 30x30cm, 230V	04807-84	HP-200	HP-200-IR-L	CR300
Infrared Hotplate, 30x30cm, 120V	04807-85	HP-200	HP-200-IR-L-120	CR300/120V/60
Infrared Hotplate/Stirrer, 30x30cm, 230V	04807-86	SHP-200	SHP-200-IR-L	CR302
Infrared Hotplate/Stirrer, 30x30cm, 120V	04807-87	SHP-200	SHP-200-IR-L-120	CR302/120V/60



# WolfLabs

**Pricing on any accessories shown can be found by keying the part number into the search box on our website.**

The specifications listed in this brochure are subject to change by the manufacturer and therefore cannot be guaranteed to be correct. If there are aspects of the specification that must be guaranteed, please provide these to our sales team so that details can be confirmed.

**[www.wolflabs.co.uk](http://www.wolflabs.co.uk)**

**Tel : 01759 301142**

**Fax : 01759 301143**

**[sales@wolflabs.co.uk](mailto:sales@wolflabs.co.uk)**

Please contact us if this literature doesn't answer all your questions.