

## Small Centrifuges to 0.5Litre max Prime Multi Rotor Centrifuges

Display indicative only



### PART NUMBERS

K2015 (230V50/60Hz)

1.K2015 (110V 60Hz)

**(Rotor required)** see the following pages

### Ambient Centrifuge

<b>Speed</b>	15,000 Rpm max (1 Rpm steps)
<b>Rcf Max</b>	10 - 22,000 G
<b>Timer</b>	0-99hours & Hold (1 sec steps)
<b>Dims HWD</b>	320 x 350 x 470mm
<b>Weight</b>	22.8 Kg (without rotor)
<b>Power</b>	175 Watts
<b>Memory</b>	99 programs
<b>Accel rates</b>	10 programs
<b>Decel rates</b>	10 programs

Display indicative only



### PART NUMBERS

K2015R (230V 50/60Hz)

1. K2015R (110V 60 Hz)

**(Rotor required)** see the following pages

### Refrigerated Centrifuge

<b>Speed</b>	15,000 Rpm (1 Rpm steps)
<b>Rcf Max</b>	10 - 22,000 G
<b>Timer</b>	0-99hours & Hold (1 sec steps)
<b>Dims HWD</b>	325 x 360 x 610mm
<b>Weight</b>	45.8 Kg (without rotor)
<b>Power</b>	575 Watts
<b>Memory</b>	99 programs
<b>Accel rates</b>	10 programs
<b>Decel rates</b>	10 programs
<b>Temp range</b>	-20C to 40C PID controlled to +/- 1C

# Medium fixed angle rotors to 3,800 Rcf (G)



Sealed lid included

Rotor	BRK5412	BRK5406
Rotor type	12 x 15ml	6 x 50m
Tube size max	17 x 120mm	30 x 120mm
Minimum Rcf (G)	10	10
Maximum Rcf (G)	3,800	3,800
Maximum Speed	6,000	6,000
Radius max cms	9.5	9.5
Sample tube angle °	30	30
Acceleration time (secs)	20	20
Deceleration time (secs)	20	20
Autoclavable (frequency)	121°C (10)	121°C (10)
Minimum Temperature @ 23°C	4°C	4°C

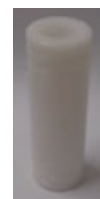
## Reducers pack of 4

<b>Rotor</b>	BRK5412
<b>Part number</b>	RM05 (5ml)
<b>Tube size max</b>	13 x 80mm
<b>Part number</b>	RM10 (10ml)
<b>Tube size max</b>	16 x 100mm



## Reducers pack of 4

<b>Rotor</b>	BRK5406
<b>Part number</b>	RM15 (15ml)
<b>Tube size max</b>	17 x 120mm
<b>Part number</b>	RM25 (25ml)
<b>Tube size max</b>	25 x 100mm



# Swing out Rotor 4 x 125ml Max. 2,200 Rcf (G)

14

## BRK5506

500ml max capacity



**Adaptors** (set 4) REQUIRED 125ml max (see Adaptor chart) B5519 Sealed Lids (set 4) Optional

Rotor	BRK5506 & Adaptors (set 4) see chart
Tube size max	45 x 100mm
Minimum Rcf (G)	10
Maximum Rcf (G)	2,200
Maximum Speed	4,000Rpm
Radius max cms	12.3cm
Sample tube angle °	0
Acceleration time (secs)	20
Deceleration time (secs)	20
Autoclavable (frequency)	121°C (20)
Minimum Temperature @ 23°C	4°C

## Adaptors for Swing out rotor BRK5506 Pack of 4

Capacity	Size. mm	Part Number	Tubes per rotor
<b>Tube type: Micro with cap. Shape: Point</b>			
0.5ml	8 x 20	AM405-5	52
1.5ml	11 x 38	AM420-5	36
2.0ml	11 x 38	AM420-5	36
0.2ml	6 x 20	AM402-5	96
0.4ml	6 x 30	AM404-5	96
<b>Tube type: Plain no cap. Shape: Round</b>			
1ml	6 x 45	AR401-5	36
3ml	10 x 60	AR403-5	28
5ml	12 x 75	AR405-5	20
6ml	12 x 82	AR405-5	20
7ml	12 x 100	AR407-5	20
9/10ml	14 x 100	AR409-5	20
15ml	17 x 100	AR415-5	16
25ml	24 x 100	AR425-5	12
50ml	34 x 100	AR450-5	4
100ml	45 x 100	AR4100-5	4
125ml	52 x 100	AR4125-5	4
<b>Tube type: Falcon with cap. Shape: Point</b>			
15ml	17 x 120	AF415-5	4
50ml	29 x 115	AF450-5	4
<b>Tube type: Falcon with cap. Shape: Square</b>			
12ml	17 x 100	AFS412-5	8
15ml	17 x 120	AFS415-5	4
25ml	25 x 90	AFS425-5	4
30ml	25 x 110	AFS430-5	4
50ml	29 x 115	AFS450-5	4
<b>Tube type: Nalgene. Oakridge with cap. Shape: Round</b>			
10ml	15 x 80	ANO410-5	12
30ml	26 x 95	ANO430-5	4
50ml	29 x 107	ANO450-5	4
100ml	38 x 106	ANO4100-5	R
<b>Tube type: Monovette. Shape Square</b>			
1.1-1.4ml	8 x 82	AM4014-5	40
2.7-3ml	11 x 82	AM403-5	40
2.6-2.9ml	13 x 81	AM429-5	28
4.5-5ml	11 x 108	AM403-5	32
7.5-8.2ml	13 x 106	AM479-5	24
4.5-5ml	15 x 92	AM450-5	20
9-10ml	16 X 108	AM490-5	16
<b>Tube type: Vacutainer. Shape: Round</b>			
1.6-5ml	13 x 82	AV416-5	24
4-7ml	13 x 106	AV450-5	24
7-9ml	15 x 92	AV470-5	20
8.5-10ml	16 x 108	AV480-5	16
<b>Tube type: Vacuette. Shape: Round</b>			
1.6-5ml	13 x 82	AV416-5	24
4-7ml	13 x 106	AV450-5	24
7-9ml	15 x 92	AV470-5	20
8.5-10ml	16 x 108	AV480-5	16



# Micro rotors to 22,000 Rcf (G)



Sealed lid included

Rotor	BRK5424	BRK5436	BRK5448	BRK5494
Rotor type	24 x 2.2ml	36 x 0.5ml	48 x 0.2 to 0.4ml	4 x Pcr Strips
Tube size max	11 x 50mm	8 x 30mm	6 x 40mm	6 x 40mm
Minimum Rcf (G)	10	10	10	10
Maximum Rcf (G)	22,000	22,000	22,000	22,000
Maximum Rpm	15,000	15,000	15,000	15,000
Radius max cms	8.75cms	8.75cms	8.75cms	8.75cms
Sample tube angle °	45	45	45	45
Acceleration time (secs)	15	15	15	15
Deceleration time (secs)	15	15	15	15
Autoclavable (frequency)	121°C (10)	121°C (10)	121°C (10)	121°C (10)
Minimum Temperature @ 23°C	4°C	4°C	4°C	4°C

## Reducers pack of 4

<b>Rotor</b>	BRK5424
<b>Part number</b>	RS04 (0.2- 0.4ml)
<b>Tube size max</b>	6 x 30mm
<b>Part number</b>	RS05 (0.5ml)
<b>Tube size max</b>	8 x 30mm



# Micro rotors High Capacity to 17,800 Rcf (G)



Sealed lid included

Rotor	BRK5648	BRK5649	BRK5698
Rotor type	48 x 2.2ml	24x2.2 & 24x0.5ml	8 x Pcr Strips
Tube size max	11 x 50mm	11x50 & 6x30mm	6 x 40mm
Minimum Rcf (G)	10	10	10
Maximum Rcf (G)	17,800	17,800	17,800
Maximum Speed	13,000	13,000	13,000
Radius max cms	9.45cms	9.45cms	9.45cms
Sample tube angle °	45	45	30
Acceleration time (secs)	20	20	20
Deceleration time (secs)	20	20	20
Autoclavable (frequency)	121°C (10)	121°C (10)	121°C (10)
Minimum Temperature @ 23°C	4°C	4°C	4°C

## Reducers pack of 4

<b>Rotor</b>	BRK5648.BRK5649
<b>Part number</b>	RS04 (0.2- 0.4ml)
<b>Tube size max</b>	6 x 30mm
<b>Part number</b>	RS05 (0.5ml)
<b>Tube size max</b>	8 x 30mm




# High speed Fixed angle rotors to 9,500 Rcf (G)



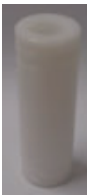
Sealed Lid included

Rotor	BRK5207	BRK5208	BRK5204
Rotor type	4 x 15ml & 4 x 10ml	8 x 15ml tube	4 x 50ml tube
Tube size max	17 x 120mm & 13 x 110mm	17 x 120mm	30 x 115mm
Minimum Rcf (G)	10	10	10
Maximum Rcf (G)	9,500	9,500	9,500
Maximum Speed	10,000	10,000	10,000
Radius max cms	8.5	8.5	8.5
Sample tube angle °	30	30	30
Acceleration time (secs)	25	25	25
Deceleration time (secs)	25	25	25
Autoclavable (frequency)	121°C (10)	121°C (10)	121°C (10)
Minimum Temperature @ 23°C	4°C	4°C	4°C

## Reducers pack of 4

<b>Rotor</b>	BRK5207 / BRK5208/5204
<b>Part number</b>	RM05 (5ml) 
<b>Tube size max</b>	13 x 80mm
<b>Part number</b>	RM10 (10ml)
<b>Tube size max</b>	16 x 100mm

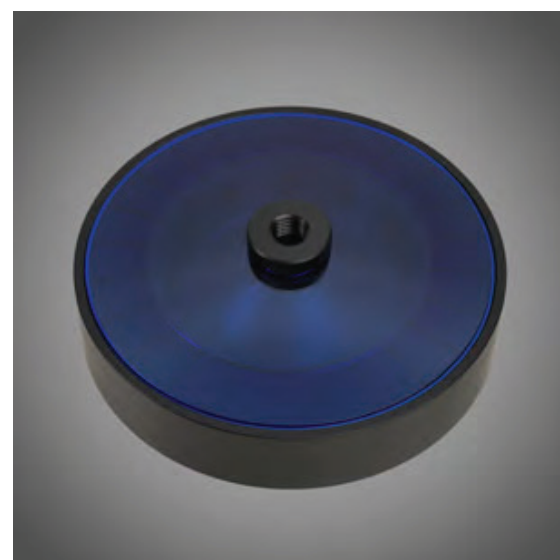
## Reducers pack of 4

<b>Rotor</b>	BRK5204
<b>Part number</b>	RM25 (25ml) 
<b>Tube size max</b>	24 x 100mm
<b>Part number</b>	RM15 (15ml)
<b>Tube size max</b>	17 x 100mm

# Haematocrit & Micro rotor to 15,800 Rcf (G)

19

Rotor		BRK5401
Rotor type	Tube size max	24 x capillary & 12 x 2ml
	Tube size	2 x 75mm & 11 x 40mm
	Minimum Rcf (G)	10
	Maximum Rcf (G)	15,800
	Maximum Rpm	13,000
	Radius max cms	8.4
	Sample tube angle °	0 & 60
	Acceleration time (secs)	20
	Deceleration time (secs)	20
	Autoclavable (frequency)	121°C (10)
	Minimum Temperature (@ 23°C)	4°C



## Consumables

Part Number	Description
8012	Plain Capillary tubes pack 10 x 100
8013	Heparanised Capillary tubes pack 10 x 100
8014	Sealing Clay Pk 10
8011	Rim seal Gasket Pk 10 <a href="#">Replace regularly every 2 months</a>

## Accessories

Part Number	Description
8003	PCV Reader

# Microtitor Plate Rotor 4 x Standard or 2 x High Plates



Rotor	BRK5740
Buckets	Complete with buckets Available with 4 x STD Plates
Rotor type Tube size max	85mmx128mm
Minimum Rcf (G)	10
Maximum Rcf (G)	1700
Maximum Rpm	3500
Radius max cms	12.4
Sample tube angle °	0°C (10)
Acceleration time (secs)	20
Deceleration time (secs)	20
Autoclavable (frequency)	121°C (10)
Minimum Temperature @ 23°C	4°C



# Small Swing out Rotor 2200 Rcf (G)

21



## BRK5508M Rotor Buckets supplied (set of 8)

Capacity Tube size max	8 x 10ml
Maximum tube size	15 x 115mm max
Minimum Rcf (G)	10
Maximum Rcf (G)	2,200
Maximum Speed	4,000
Radius max cms	12.3
Sample tube angle °	0
Acceleration time (secs)	20
Deceleration time (secs)	20
Autoclavable (frequency)	121°C (10)
Minimum Temperature @ 23°C	4°C

# Cytology rotors to 500Rcf (G)



Rotor	4460 (12 Place)
Rotor type	12 x 0.2 to 6ml
Tube size max	Single or double
Minimum Speed Rpm	200
Maximum Speed Rpm	2,000
Maximum Rcf (G)	500
Radius max cms	11.2
Sample tube angle °	0
Acceleration time (secs)	25
Deceleration time (secs)	25
Autoclavable (frequency)	121°C (10)
Minimum Temperature @ 23°C	4°C

## Accessories



**4446**

Double sample holder with card (up to 1ml)



**4444**

Single sample holder with card (up to 1ml)



**4600**

Double sample holder with card (up to 6ml)



**4462**

Stainless steel clips



# WolfLabs

**Pricing on any accessories shown can be found by keying the part number into the search box on our website.**

The specifications listed in this brochure are subject to change by the manufacturer and therefore cannot be guaranteed to be correct. If there are aspects of the specification that must be guaranteed, please provide these to our sales team so that details can be confirmed.

**[www.wolflabs.co.uk](http://www.wolflabs.co.uk)**

**Tel : 01759 301142**

**Fax : 01759 301143**

**[sales@wolflabs.co.uk](mailto:sales@wolflabs.co.uk)**

Please contact us if this literature doesn't answer all your questions.